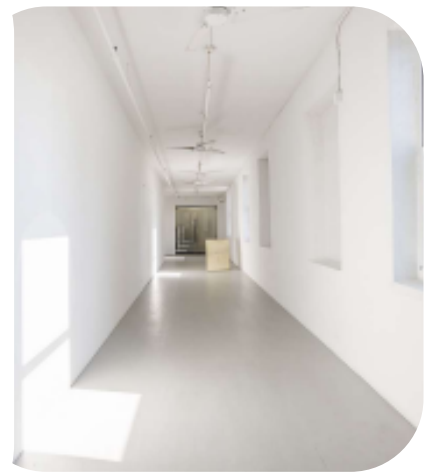




88 ELDRIDGE STREET *For Lease*



88 ELDRIDGE STREET

BETWEEN GRAND & HESTER STREETS
AKA 59-63 ALLEN STREET

Floor: Entire 2nd, 3rd & 5th Floors

Area: 8,315 RSF Each

Rental Rate: \$42/RSF

Possession: Immediate

Term: 5-10 Years

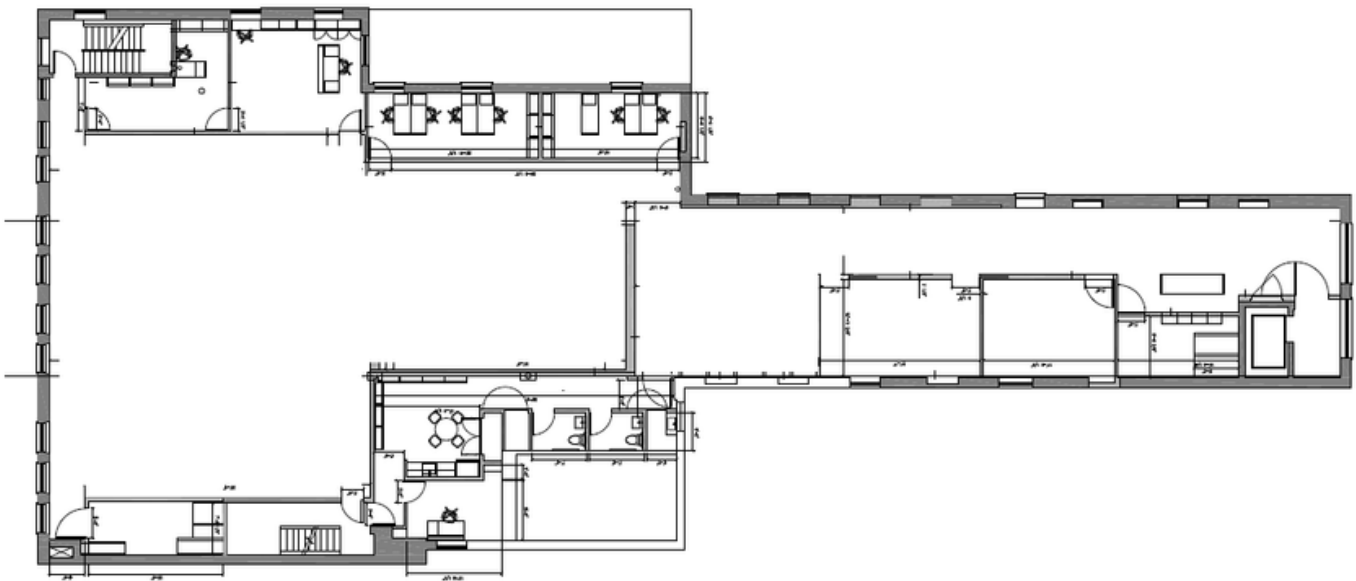
- Ability to lease 25,000 RSF contiguous block of space
- Part Ground of 1,000SF can be made available
- 13' ceiling heights & brand new lobby, windows, and elevator cabs
- Ability to add huge private terrace/rooftop
- Access to huge freight elevator
- Ability to have dedicated entrance off Allen Street
- 5th Floor is built out as existing gallery/showroom
- Located within a few blocks from the **B D F M J Z**
- Excellent branding opportunity
- Close proximity to Essex Crossing
- All uses considered, such as: Medical, Education, Entertainment



88 ELDRIDGE STREET

BETWEEN GRAND & HESTER STREETS
AKA 59-63 ALLEN STREET

FLOOR PLAN:



BUILDING PHOTO:



88 ELDRIDGE STREET

BETWEEN GRAND & HESTER STREETS
AKA 59-63 ALLEN STREET

AREA MAP:



NEIGHBORS:



Spring

James Cohan

MILTON RESNICK AND PAT PASSLOF FOUNDATION

MIGUEL ABREU GALLERY

MARC STRAUS

SKIN CONTACT
WINE BAR

HELLER
ORGANIZATION



917.332.7530



Josh@HellerOrg.com

