

746 9th Avenue

Between West 50th & 51st Streets
New York, NY 10019

HELLER
ORGANIZATION



SIZE: Approx. 422 SF – Ground Floor
Approx. 195 SF – Basement

POSSESSION: Negotiable

RENT & KEY MONEY: Upon Request

TERM: Lease Assignment *8 Years Remain

TRANSPORTATION: **N R W 1 C E**

COMMENTS:

- Built Kitchen, Vented w/ Gas
- Busy 9th Avenue Location
- Interior Access to Basement
- Exposed Brick

NEIGHBORS:

TOTAL HEALTH & WELLNESS
MEDICAL CENTER

GERSHWIN THEATRE



WORLD WIDE PLAZA

EXCLUSIVE AGENT

Ina Donath
ina@hellerorg.com
917.449.6001

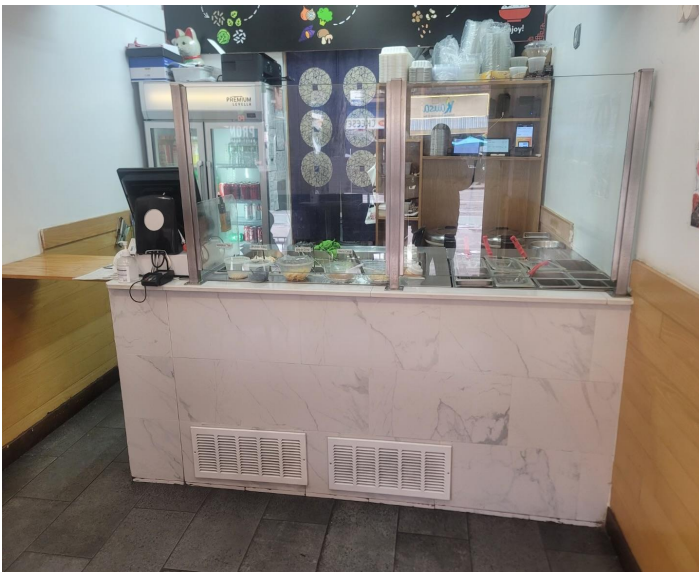
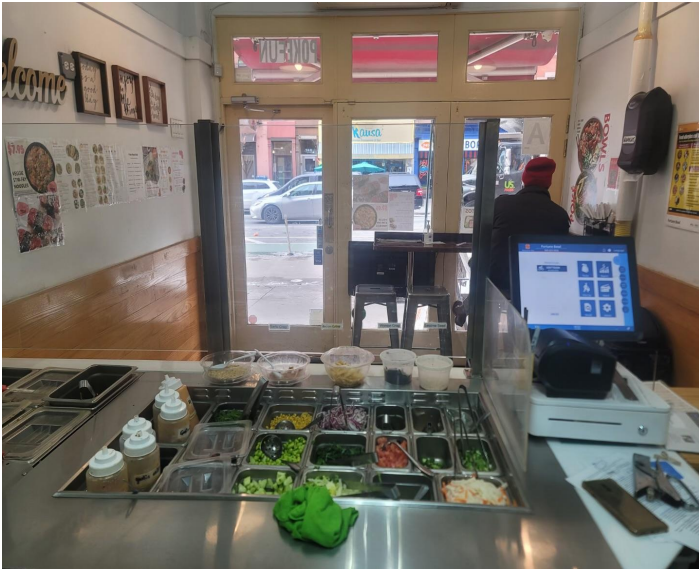
54 West 21st Street, Suite #608 | New York, NY 10010 | O: 212.366.5034 | retail@hellerorg.com

All information is from sources deemed reliable. No representation is made and we do not guarantee the accuracy of any information provided. All information must be independently verified. The value of any real estate investment is dependant on a variety of factors and should be evaluated carefully by prospective purchasers and/or tenants.

746 9th Avenue

Between West 50th & 51st Streets
New York, NY 10019

HELLER
ORGANIZATION



EXCLUSIVE AGENT

Ina Donath
ina@hellerorg.com
917.449.6001

54 West 21st Street, Suite #608 | New York, NY 10010 | O: 212.366.5034 | retail@hellerorg.com

All information is from sources deemed reliable. No representation is made and we do not guarantee the accuracy of any information provided. All information must be independently verified. The value of any real estate investment is dependant on a variety of factors and should be evaluated carefully by prospective purchasers and/or tenants.