

29 EAST 10TH  
STREET



FOR  
SALE

Platinum  
PROPERTIES



## 29 EAST 10TH STREET

NoHo

**ASKING:** \$2,450,000

**SUITE:** GROUND & LOWER LEVEL

**APPROX SQUARE FOOTAGE:** 3,000

**ANNUAL COMMON CHARGES:** \$18,547.20 (\$6.18 PSF)

**ANNUAL TAXES:** \$54,580.52 (\$18.28 PSF)

Welcome to an exceptional retail condo in the heart of Greenwich Village, located at a prime location between Broadway and University. This property offers a fantastic opportunity for investors and end-user seeking to own a piece of New York City's most sought-after retail destinations.

This unique space boasts 2,000 square feet on the ground floor, complete with a fully built-out 1,000 square foot lower level. The lower-level features two conference rooms, a lounge, and a pantry area, perfect for hosting meetings.

This stunning retail space is surrounded by a mix of independent boutiques, cafes, and restaurants, giving it a vibrant and dynamic atmosphere.

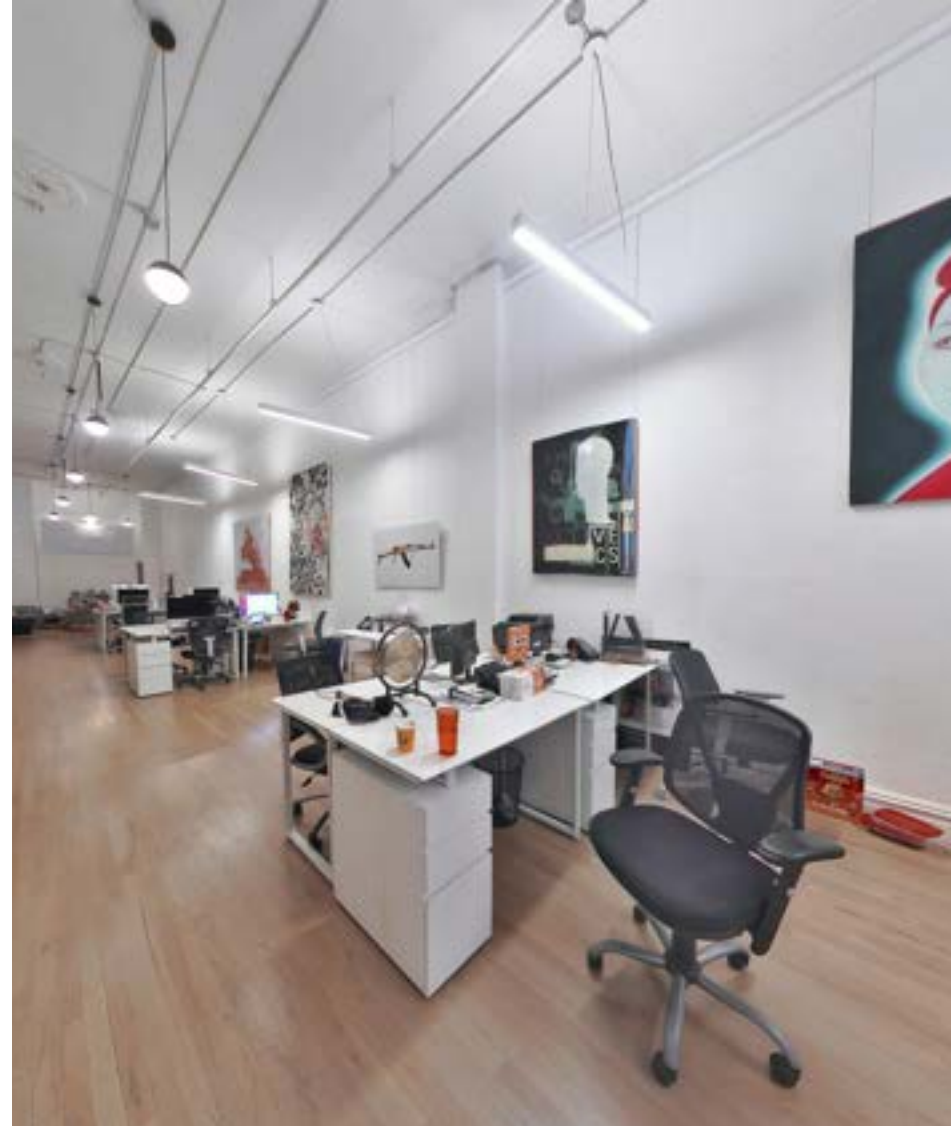
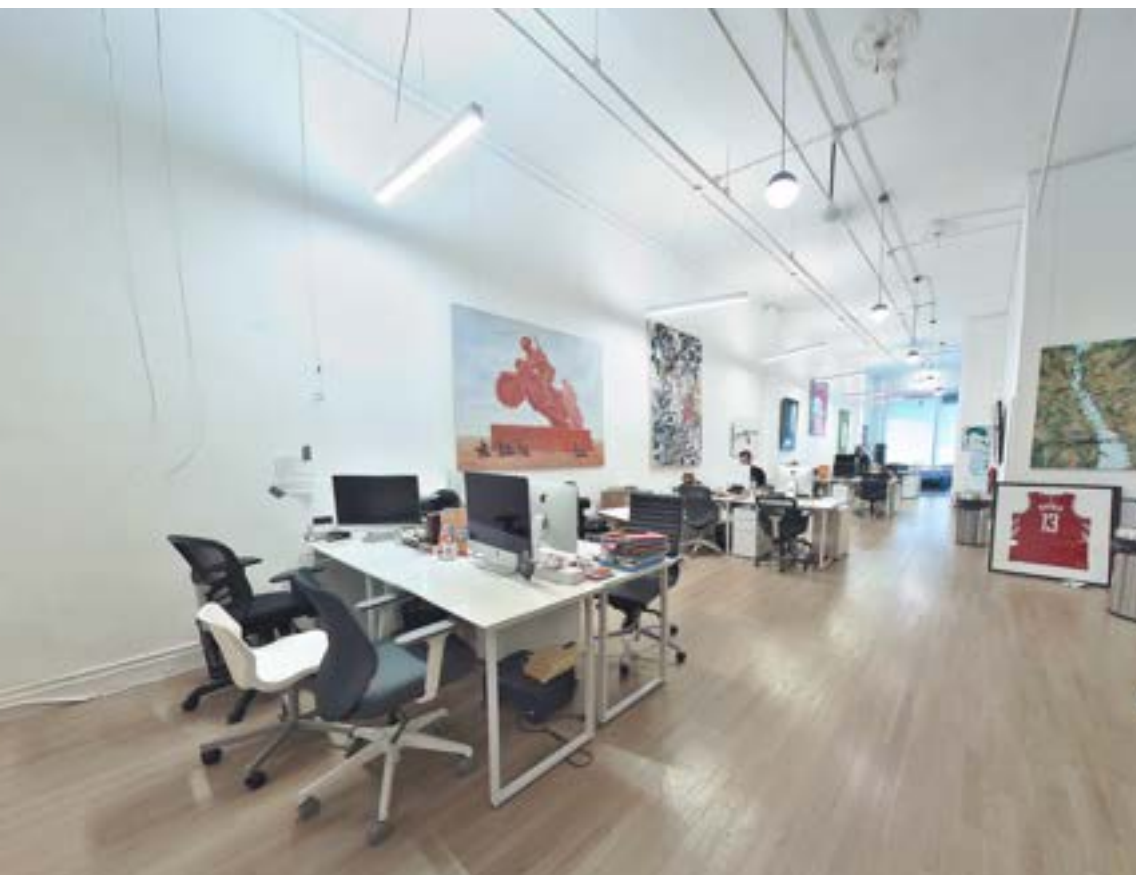
The property is situated in one of the most desirable locations in Manhattan, offering easy access to public transportation and major thoroughfares, making it a convenient destination for shoppers and business owners alike.

Don't miss out on this incredible opportunity to own a piece of one of New York City's most sought-after retail destinations. Contact us today to schedule a private tour of this stunning retail condo.

[CLICK FOR VIRTUAL TOUR](#)



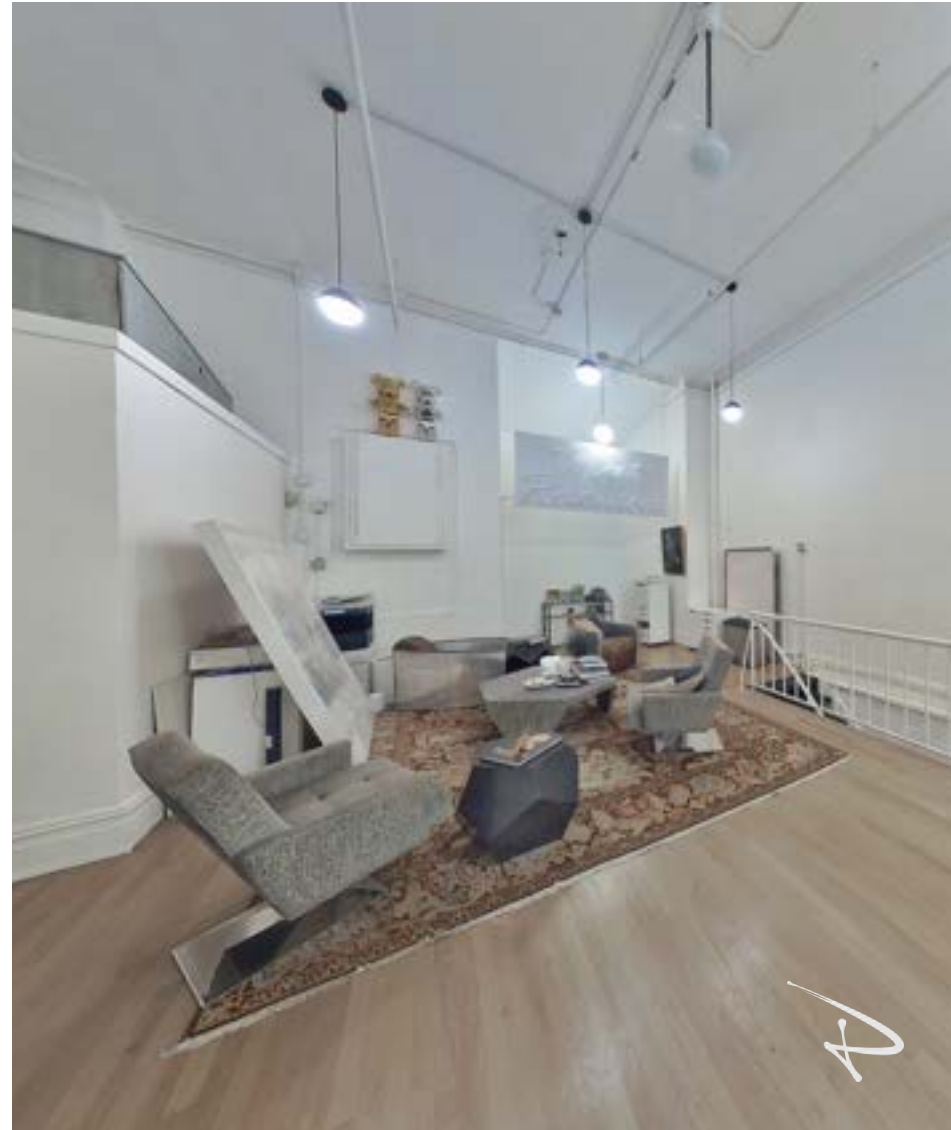




29 EAST 10TH  
PHOTOS



29 EAST 10TH  
PHOTOS



A



29 EAST 10TH  
PHOTOS



A

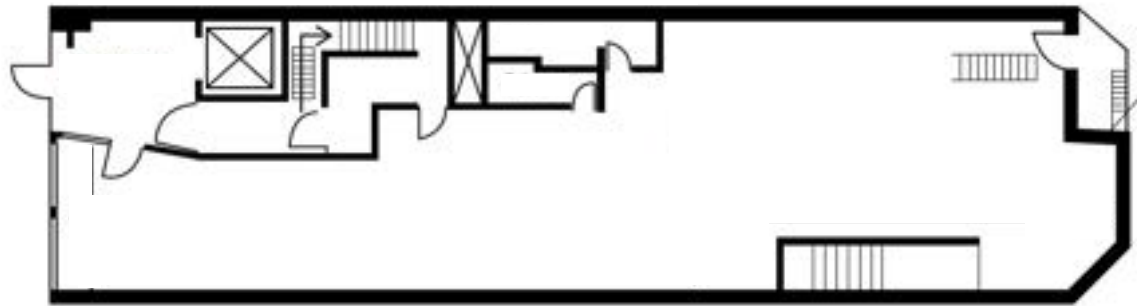
29 EAST 10TH  
FLOORPLAN



GROUND FLOOR

2,000 RSF

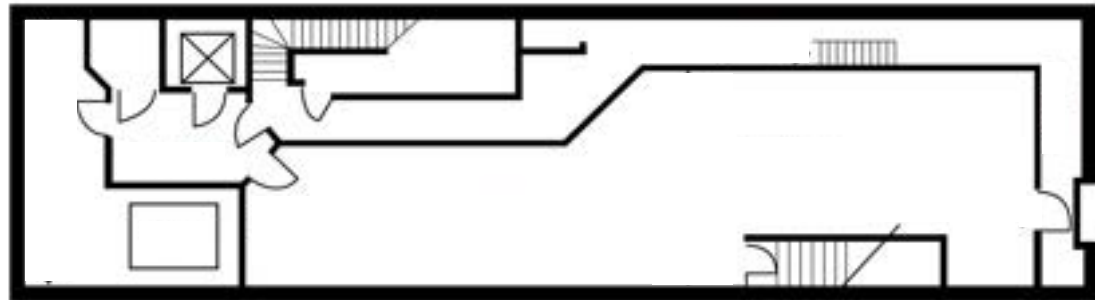
CEILINGS: 14 FT



LOWER LEVEL

1,000 RSF

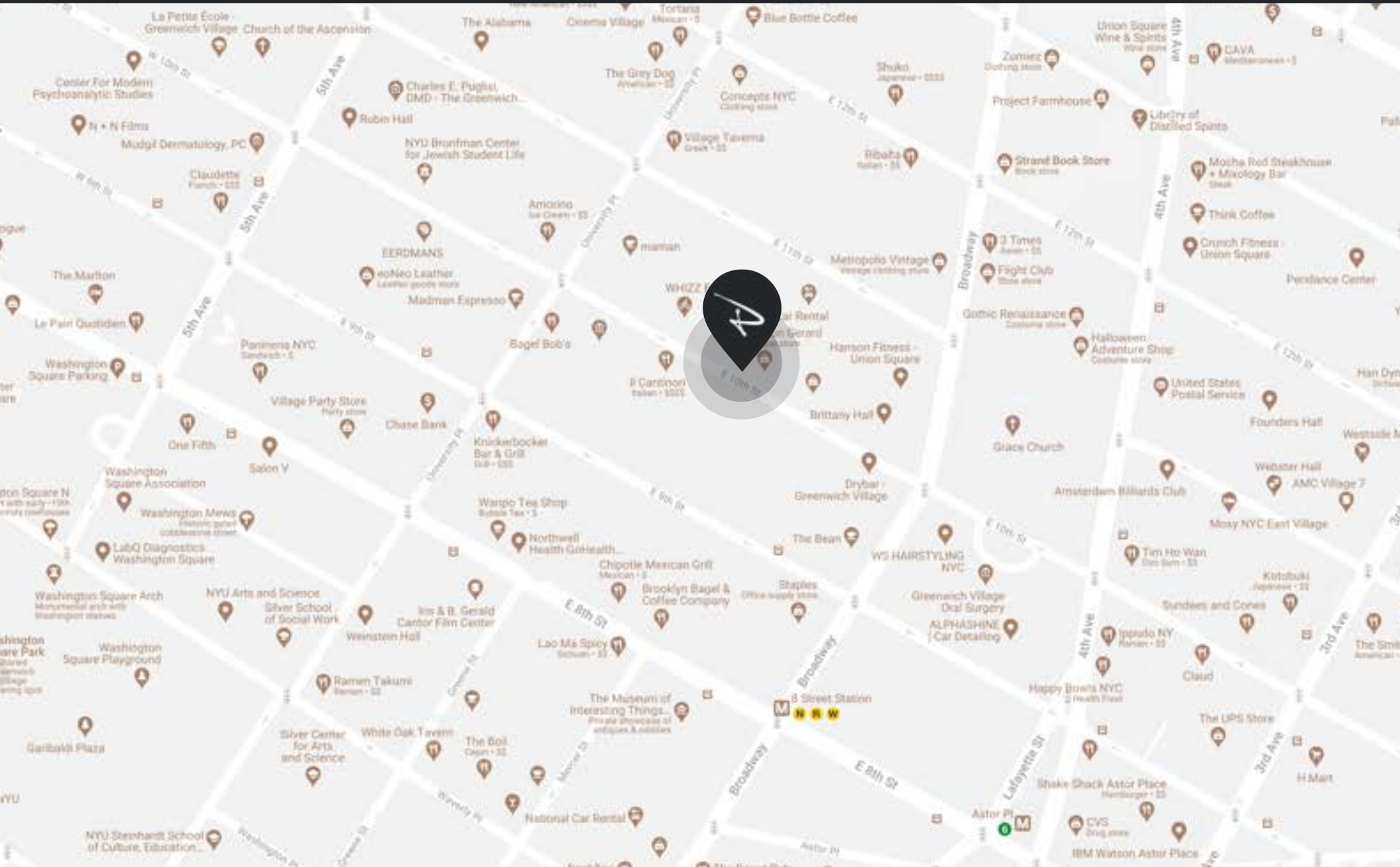
CEILINGS: 9 FT



A handwritten signature or mark in the bottom right corner of the page, consisting of a stylized, cursive letter 'A'.

# PROPERTY HIGHLIGHTS

29 EAST 10TH STREET



# CONTACT OUR TEAM



**STEVEN  
EVANS**

LEAD COMMERCIAL AGENT

(646) 533-9589  
SEVANS@PP-NYC.COM



**JOSEPH  
ZALTA**

LICENSED REAL ESTATE  
SALESPERSON

(718) 419-1112  
JZALTA@PP-NYC.COM

**EXCLUSIVELY  
LISTED BY**

## HEADQUARTERS

100 Wall Street  
2nd Floor  
New York, NY 10005  
O: 212.825.0050

