

25 PRINCE
STREET



FOR
LEASE

Platinum
PROPERTIES



25 PRINCE STREET

Nolita

TERM: NEGOTIABLE

POSSESSION: 30 DAYS

ASKING RENT: UPON REQUEST

SQUARE FOOTAGE: 800 SF + BASEMENT

Located on a popular shopping street in the heart of Nolita, 25 Prince Street is a prime retail space that offers a fantastic opportunity for businesses looking to tap into the trendy and fashionable customer base. This 800 square foot ground floor space is perfectly suited for a boutique and is currently occupied by Soludos, a well-known retailer in the area.

The location of this retail space is unbeatable, situated between Elizabeth and Mott Street, and offering excellent visibility and high foot traffic.

The space features large windows that provide plenty of natural light and great visibility. The interior is spacious and flexible, allowing for customization to fit the specific needs and aesthetic of the business. With Nolita's reputation as a hub for stylish and upscale retail, and the location of 25 Prince Street on a popular shopping street, this space is highly desirable for businesses seeking a prime retail location in New York City.

Don't miss your chance to secure this amazing retail space in Nolita. Contact us today to schedule a viewing.





25 PRINCE
PHOTOS



25 PRINCE
FLOORPLAN



GROUND FLOOR

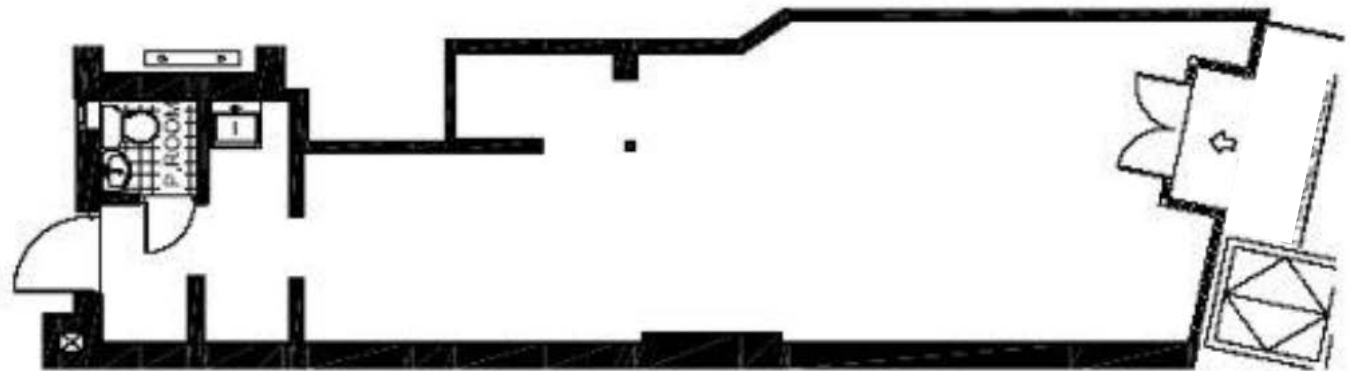
800 RSF

CEILINGS: 12 FT



BASEMENT

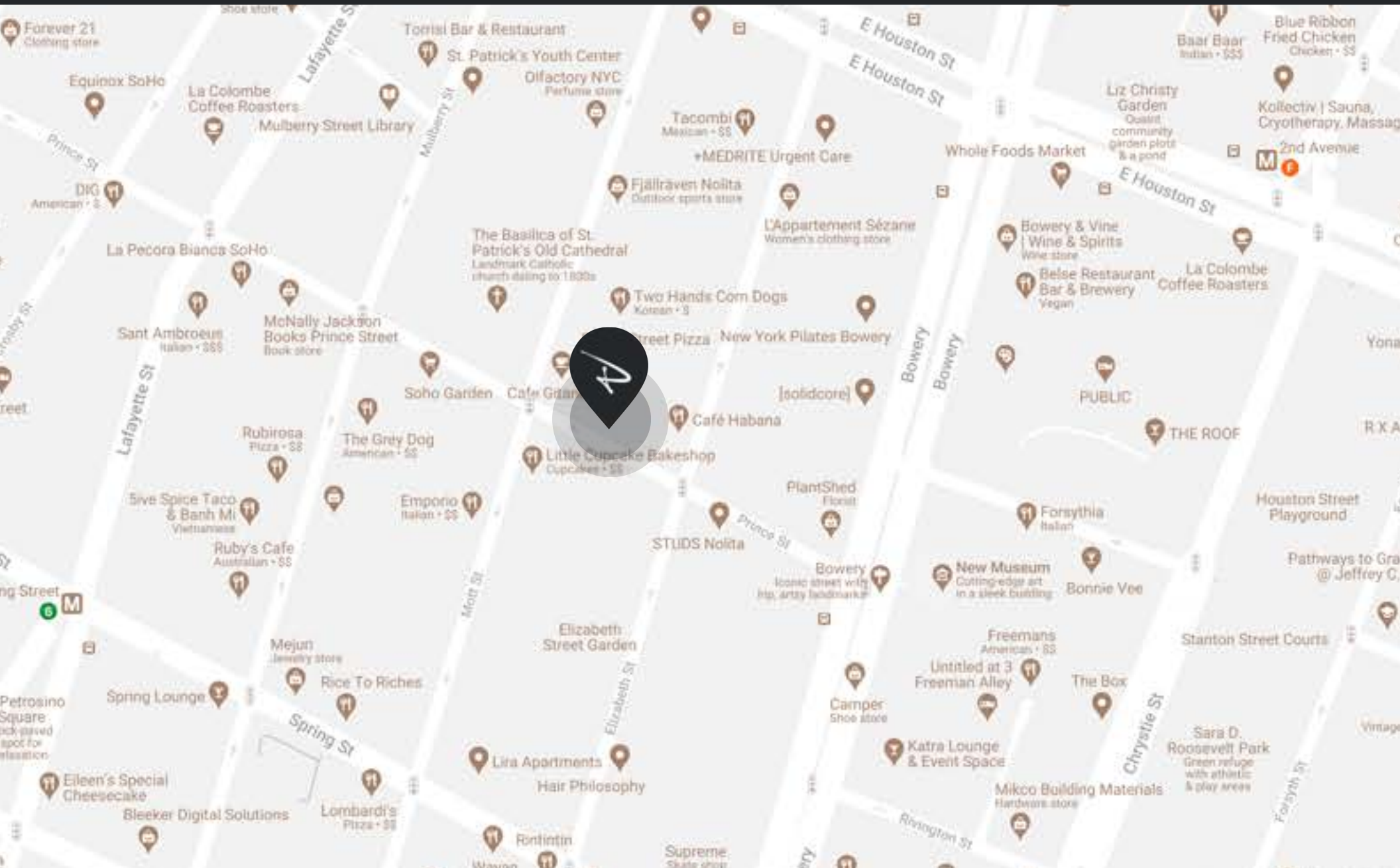
CEILINGS: 9 FT



A

PROPERTY HIGHLIGHTS

25 PRINCE STREET



CONTACT OUR TEAM



**STEVEN
EVANS**

LEAD COMMERCIAL AGENT

(646) 533-9589
SEVANS@PP-NYC.COM



**JOSEPH
ZALTA**

LICENSED REAL ESTATE
SALESPERSON

(718) 419-1112
JZALTA@PP-NYC.COM

EXCLUSIVELY
LISTED BY

HEADQUARTERS

100 Wall Street
2nd Floor
New York, NY 10005
O: 212.825.0050

