

# 520

WEST 27TH



# 520

WEST 27TH

Platinum

**POSSESSION:**  
IMMEDIATE

**RENTAL RATE:**  
UPON REQUEST

**TERM:**  
NEGOTIABLE

## PRIME CHELSEA LOCATION

As an exclusive agent, Platinum Properties is pleased to offer the following gallery/office for lease:

- Suite 304: 900 Rentable Square Feet
  - 1 Office/Breakout Room
  - Large 300 SF Terrace
  - 12 'Ceilings
  - Large Open Pantry Area
  - Bamboo wood flooring
  - Private Bathroom
  - Can be combined with suite 303 for a total of 3,025 RSF

# 520 WEST 27TH

Platinum



# 520

WEST 27TH

## FLOORPLANS

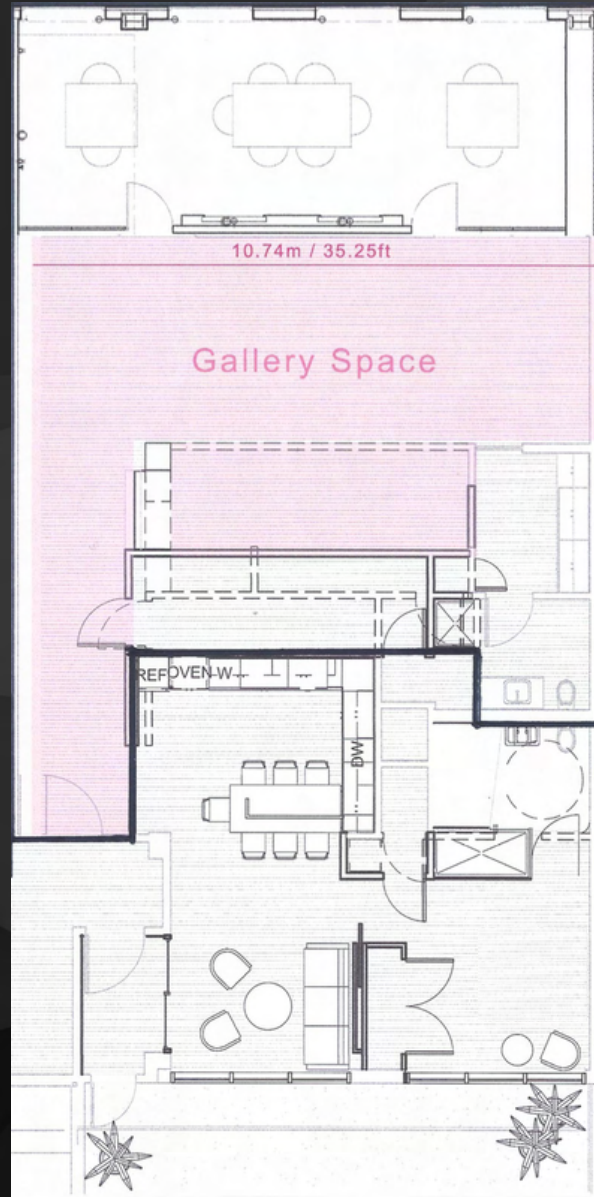
Platinum



**PARTIAL  
THIRD FLOOR**  
900 RSF



**OUTDOOR  
SPACE**  
300 SQFT



# 520

WEST 27TH

520 WEST 27TH STREET



- LAURENCE MILLER GALLERY
  - KASMIN GALLERY
  - ANDERS WAHLSTEDT FINE ART
  - PACE GALLERY
  - GUY HEPNER GALLERY
  - MARLBOROUGH GALLERY
  - AGORA GALLERY
  - TAGLIATELLA GALLERIES
  - GAGOSIAN GALLERY
  - LISSON GALLERY
  - YOSSI MILO GALLERY
- Chelsea Park
- Chelsea Waterside Park
- The High Line

# 520

WEST 27TH

CONTACT US  
OUR TEAM

Platinum



**STEVEN EVANS**

DIRECTOR OF COMMERCIAL LEASING

(646) 533-9589

[SEVANS@PP-NYC.COM](mailto:SEVANS@PP-NYC.COM)



**EMRE BOZKURT**

LICENSED REAL ESTATE SALESPERSON

(518) 505-0518

[EBOZKURT@PP-NYC.COM](mailto:EBOZKURT@PP-NYC.COM)