

319 Greenwich Street

Between Duane & Reade Streets
New York, NY 10013

HELLER

ORGANIZATION



SIZE: Approximately 3,500 SF - Ground Floor
Approximately 3,000 SF - Lower Level

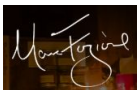
POSSESSION: Arranged

RENT: Upon Request

COMMENTS:

- Fully built, vented Restaurant Space available
- Prime TriBeCa location
- Useable private lower level space included

NEIGHBORS:



EXCLUSIVE AGENT

Joshua Singer
josh@hellerorg.com

917.332.7530

54 West 21st Street, 6th Floor | New York, NY 10010 | P: 212 366-5034 | retail@hellerorg.com

All information is from sources deemed reliable. No representation is made and we do not guarantee the accuracy of any information provided. All information must be independently verified. The value of any real estate investment is dependant on a variety of factors and should be evaluated carefully by prospective purchasers and/or tenants.