

920

BROADWAY

PLUG&PLAY SUBLEASE OPPORTUNITY

FLATIRON
SOUTHEAST CORNER OF 21ST STREET


CURRENT

920BROADWAY

SIZE

Entire 3rd Floor: 6,500 RSF

TERM

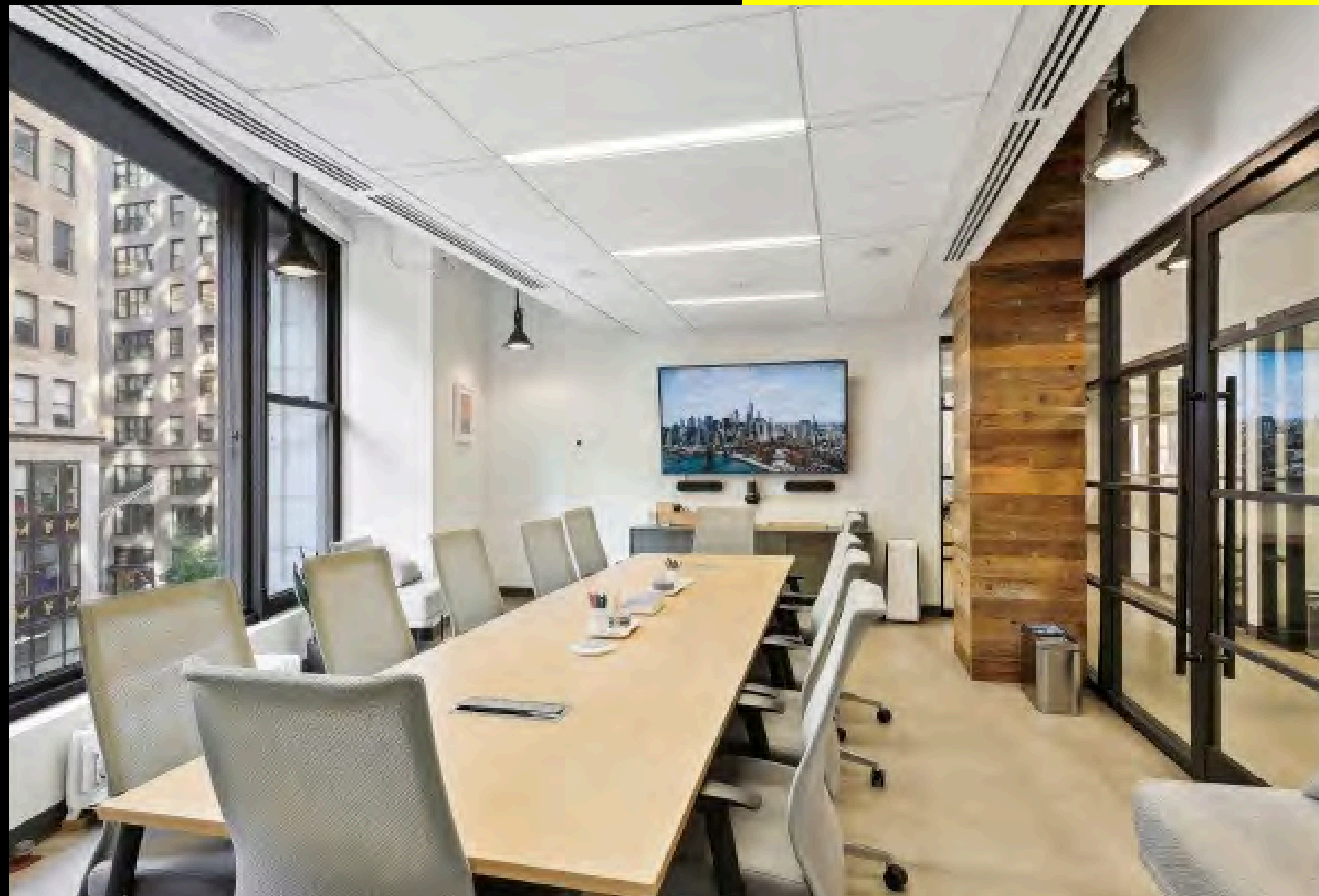
Thru August 2027

POSSESSION

Immediate

HIGHLIGHTS

- Full floor, plug and play sublease opportunity in the heart of Flatiron
- Oversized windows overlooking Broadway offering abundance of natural light
- Built with:
 - 1 Large conference room
 - 2 Windowed offices
 - 3 Medium conference rooms
 - 1 Phone room
- Landscaped tenant only roof deck



920 BROADWAY

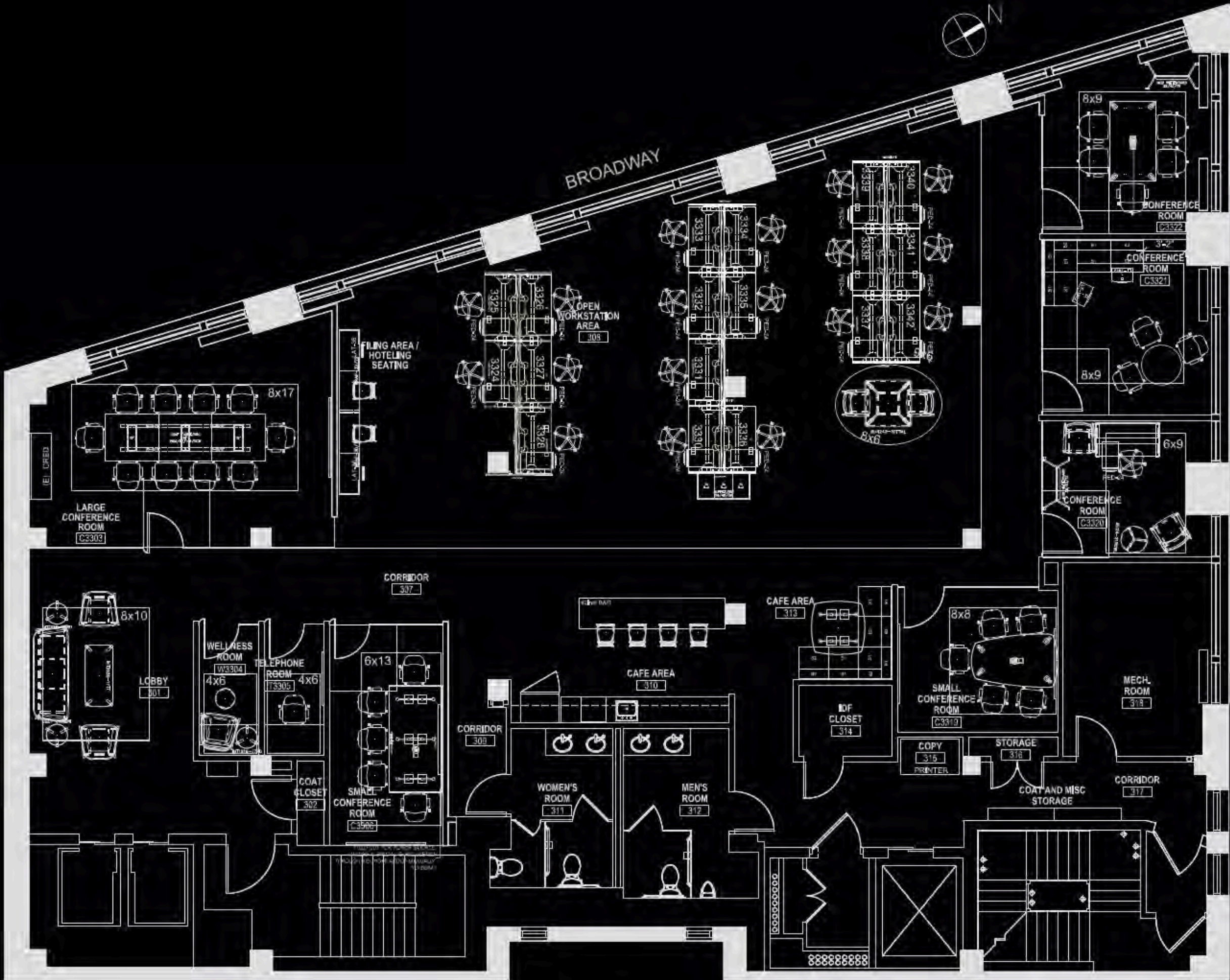


920 BROADWAY



920BROADWAY

FLOORPLAN





CONTACT

ROB KLUGE
rob@currentreadvisors.com
732.547.4385

ADAM HENICK
adam@currentreadvisors.com
646.845.0351

CURRENT
Real Estate Advisors