

32 LAIGHT STREET

RETAIL SPACE FOR SALE

TRIBECA
BETWEEN VARICK AND HUDSON STREETS


CURRENT

32 LAIGHT STREET

SIZE

Ground Floor: 2,200 SF

Lower Level: 800 SF

Total: 3,000 SF

ASKING PRICE

\$2,495,000

MONTHLY RE TAX

\$1,894.46 (Annual \$22,733.52)

MONTHLY COMMON CHARGES

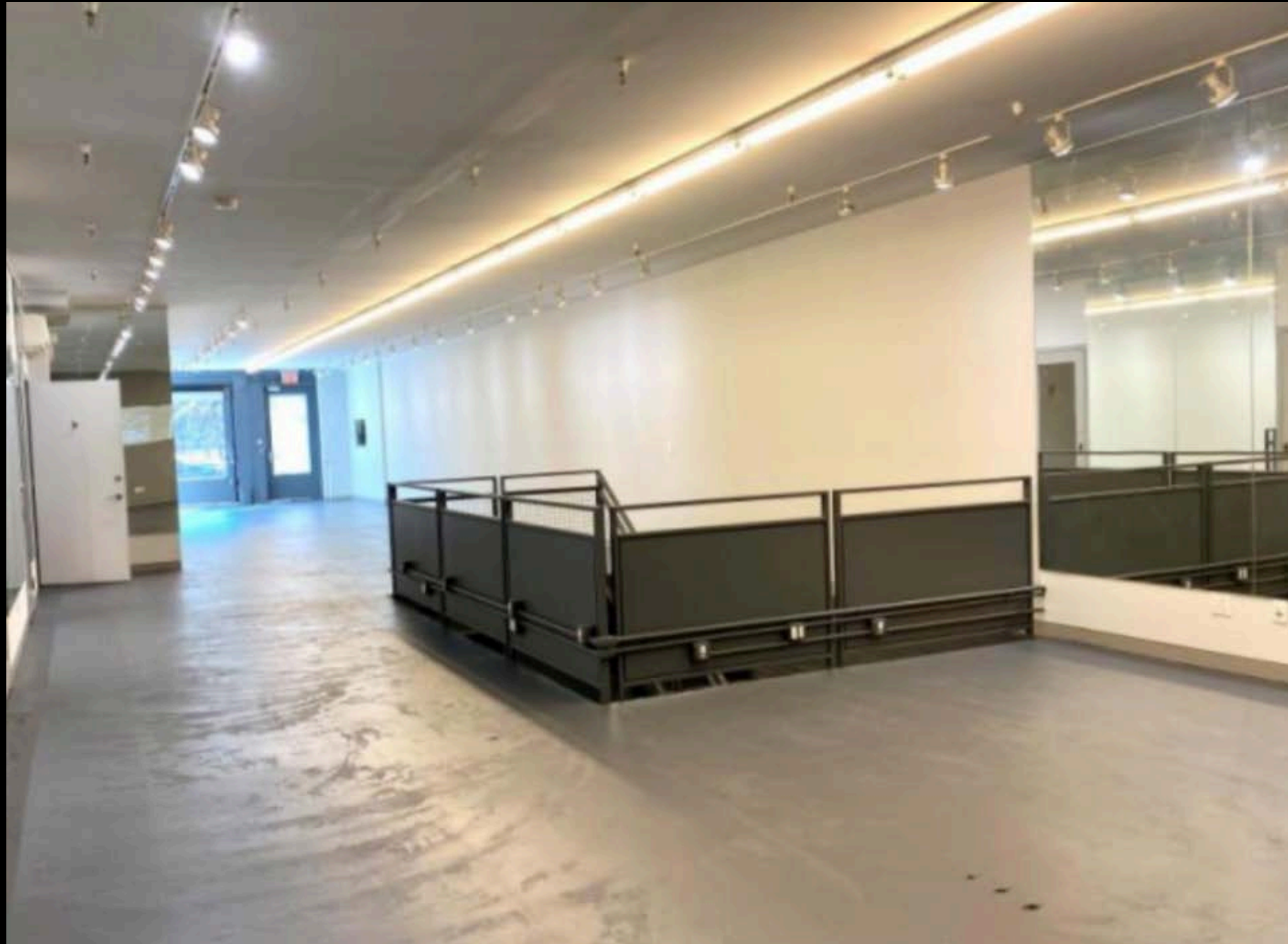
\$1,351.77

HIGHLIGHTS

- Beautifully renovated turn key ground floor duplex condominium for sale
- Space with 3 existing subdivisions, 2 bathrooms and kitchen
- Two means of egress on each floors
- 11'-12' ceiling heights
- Column free space
- 20' of frontage on Laight Street

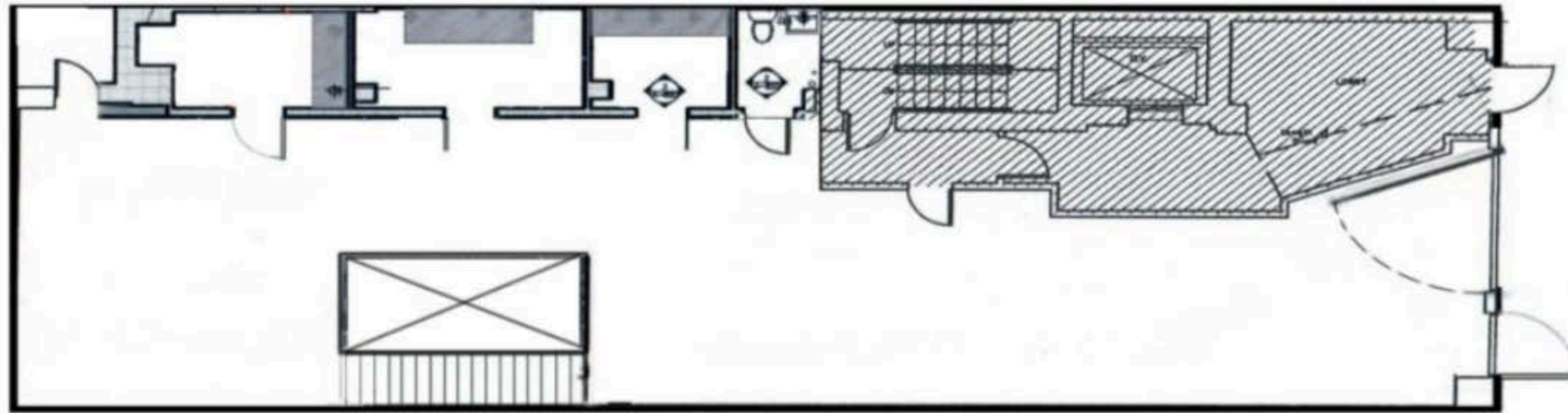


32LAIGHTSTREET



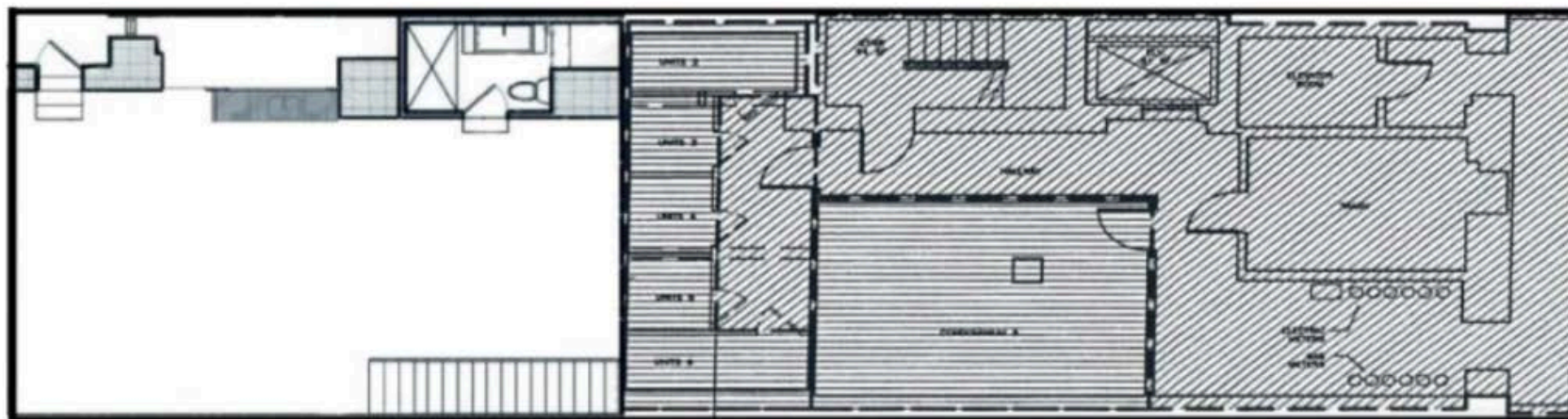
32 LAIGHT STREET

GROUND FLOOR



2,000 NET SF

LOWER LEVEL



1,000 NET SF

LAIGHT STREET





CONTACT

MICHAEL SEGERMAN

msegerman@currentreadvisors.com

516.297.3337

CURRENT[®]
Real Estate Advisors