

202 AVENUE A

FULLY BUILT RESTAURANT FOR LEASE

BETWEEN 12TH & 13TH STREET



202 AVENUE A

SIZE

Ground Floor: 2,000 SF

Lower Level: 1,000 SF

Total: 3,000 SF

ASKING PRICE

Upon request

POSSESSION

Immediate

HIGHLIGHTS

- Fully built 2nd Generation Restaurant with active liquor license in place
- Built out Kitchen in Lower Level with Venting and Hood in Place
- Brand new HVAC
- Fully Operable Storefront
- Sidewalk seating with 26' of available frontage

NEIGHBORHOOD TENANTS

Hi-Note, Foul Witch, Blind Barber, Tompkins Square Bagels, Momofuku, Westville, Trader Joe's, Target, Tompkins Square Park

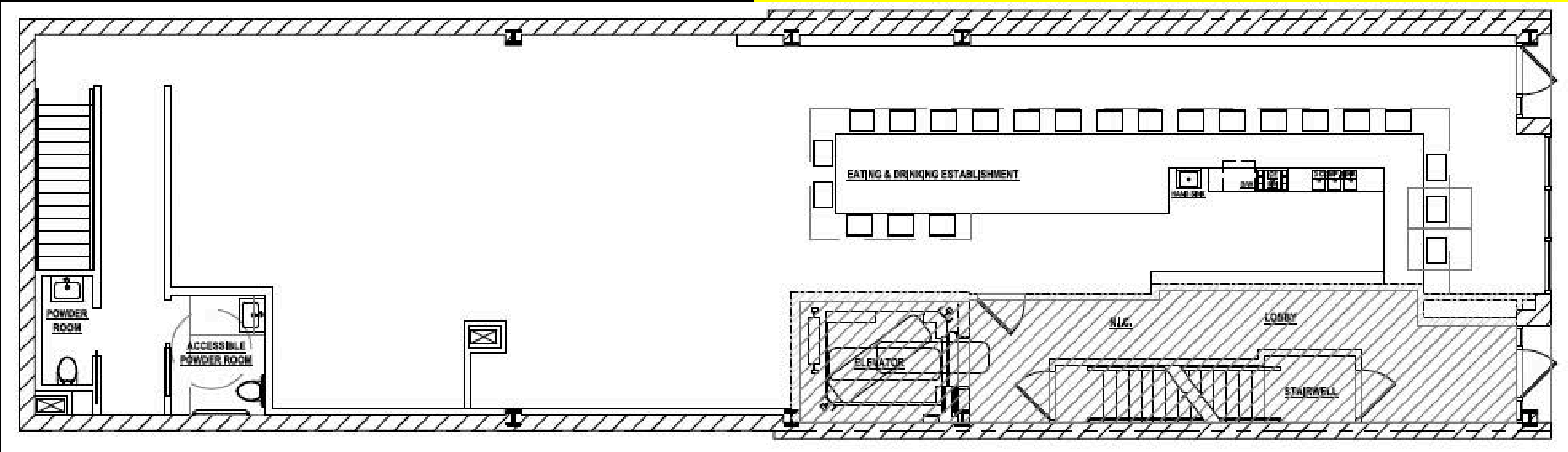


202 AVENUE A

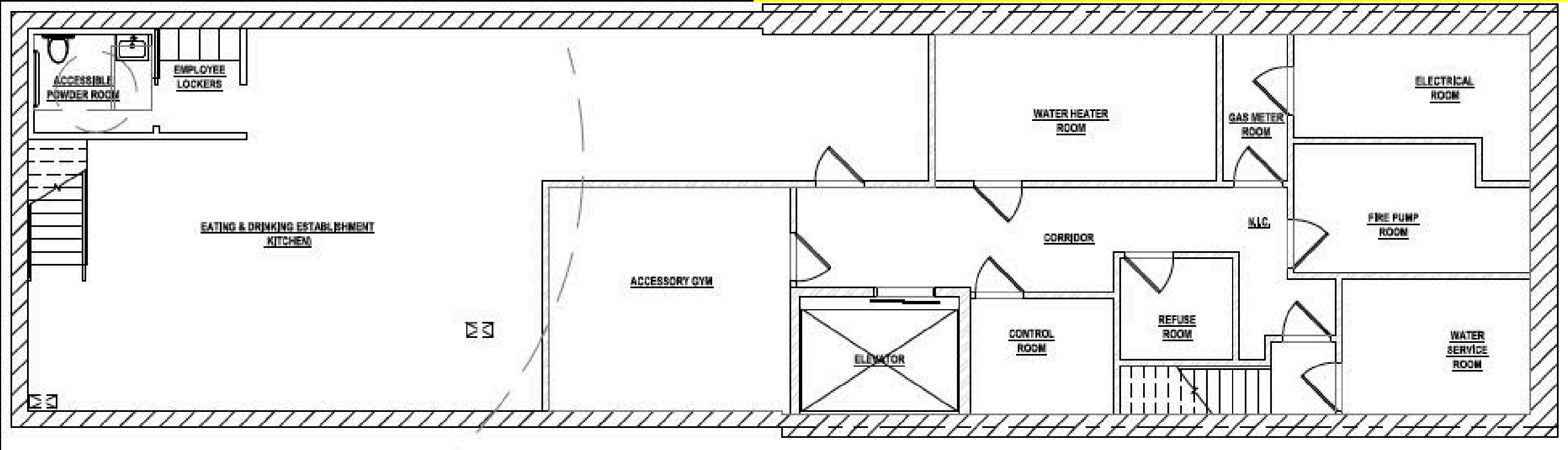


202 AVENUE A

GROUND FLOOR



LOWER LEVEL





CONTACT

MICHAEL SEGERMAN

msegerman@currentreadvisors.com

516.297.3337

CURRENT
Real Estate Advisors