

An aerial photograph of a city street, likely in New York City, showing a mix of historic brick buildings and modern structures. The street is lined with trees and has several cars parked along the side. A yellow border frames the entire image.

# 410 W 4TH

MEATPACKING OFFICE OPPORTUNITY

BETWEEN WASHINGTON STREET AND 9TH AVENUE

 **CURRENT**



# 410W14TH

## SIZE

Full 2nd Floor: 3,578 RSF

## ASKING PRICE

Upon request

## TERM

Negotiable

## HIGHLIGHTS

- Full floor office opportunity located in the heart of the Meatpacking District
- Currently built out with:
  - 7 Private offices
  - 1 Conference room
  - Reception area
  - Open area
  - 2 Private restrooms
- High ceilings
- Hardwood floors throughout
- Tenant-controlled advanced air filtration system





410W14TH

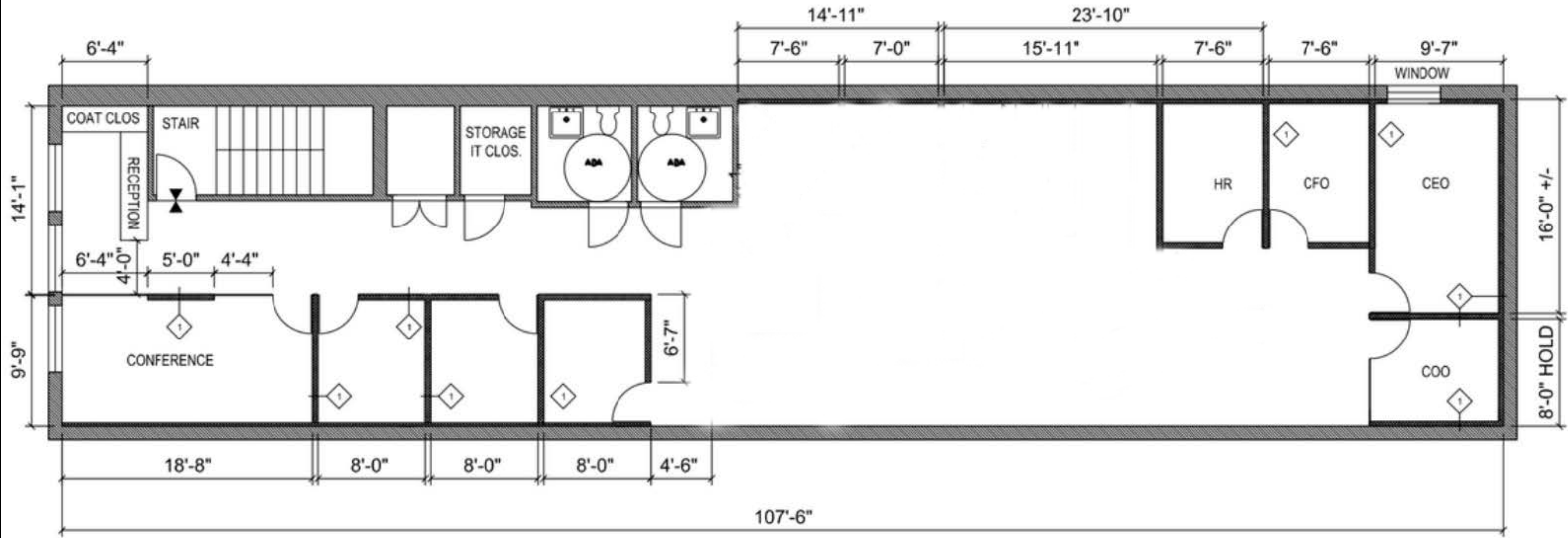




# 410W14TH

FLOOR PLAN

AS BUILT







# CONTACT

ODED NACHMANI  
oded@currentadvisors.com  
516.652.0606

**CURRENT**  
Real Estate Advisors