


555

WEST 25TH STREET

BETWEEN TENTH AND ELEVENTH AVENUES


CURRENT

BUILDING OVERVIEW

- Full floor office space available
- Tenant controlled HVAC
- Private keyed elevator entry/video security system
- On-site super
- 400 AMPS per floor
- 3 Sides of light on every floor
- 12' Ceiling heights



555 WEST 25TH STREET

Full 4th Floor

SIZE

9,011 RSF

POSSESSION

Immediate

ASKING

\$51 PSF

TERM

3-10 Years

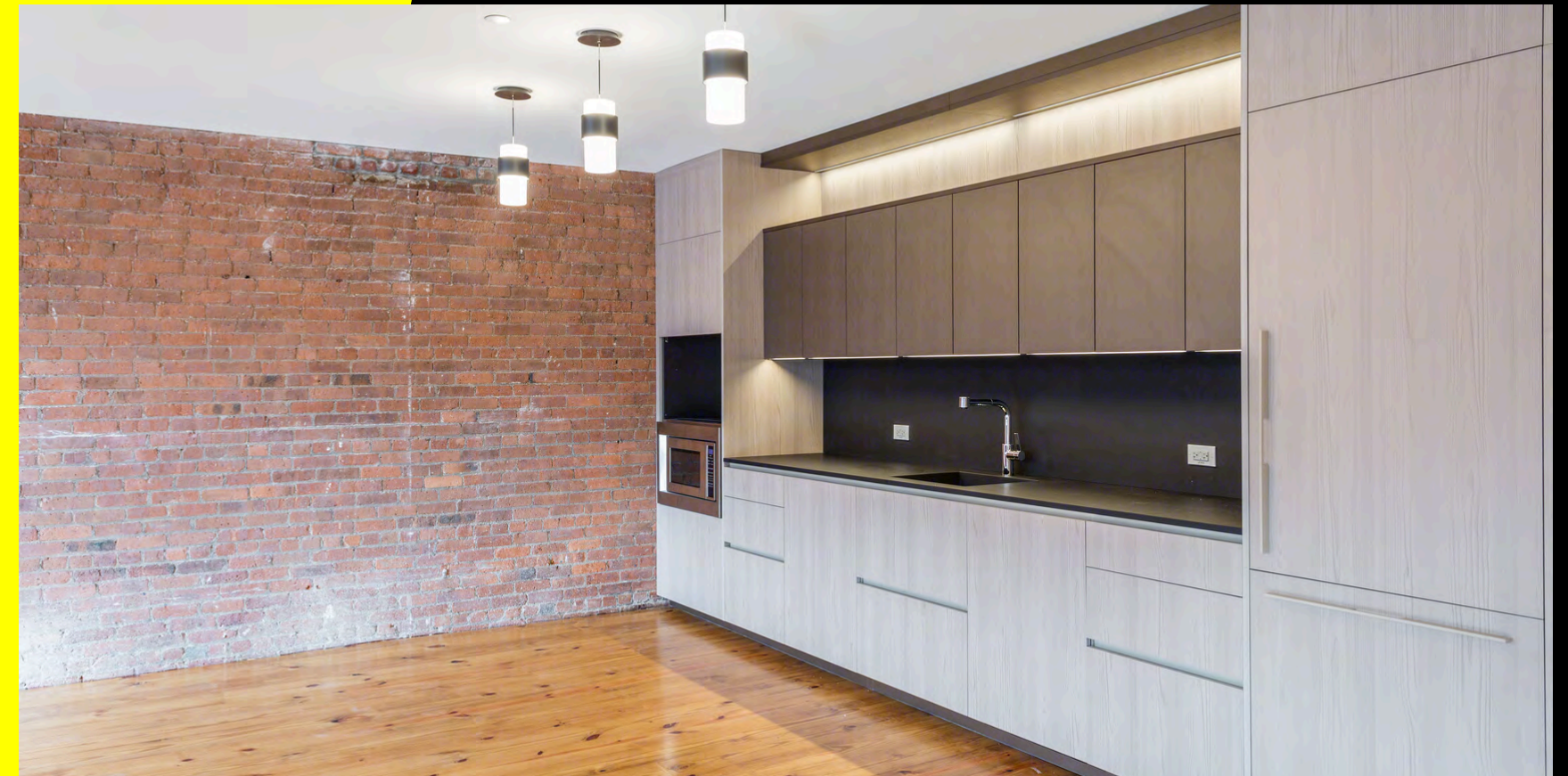
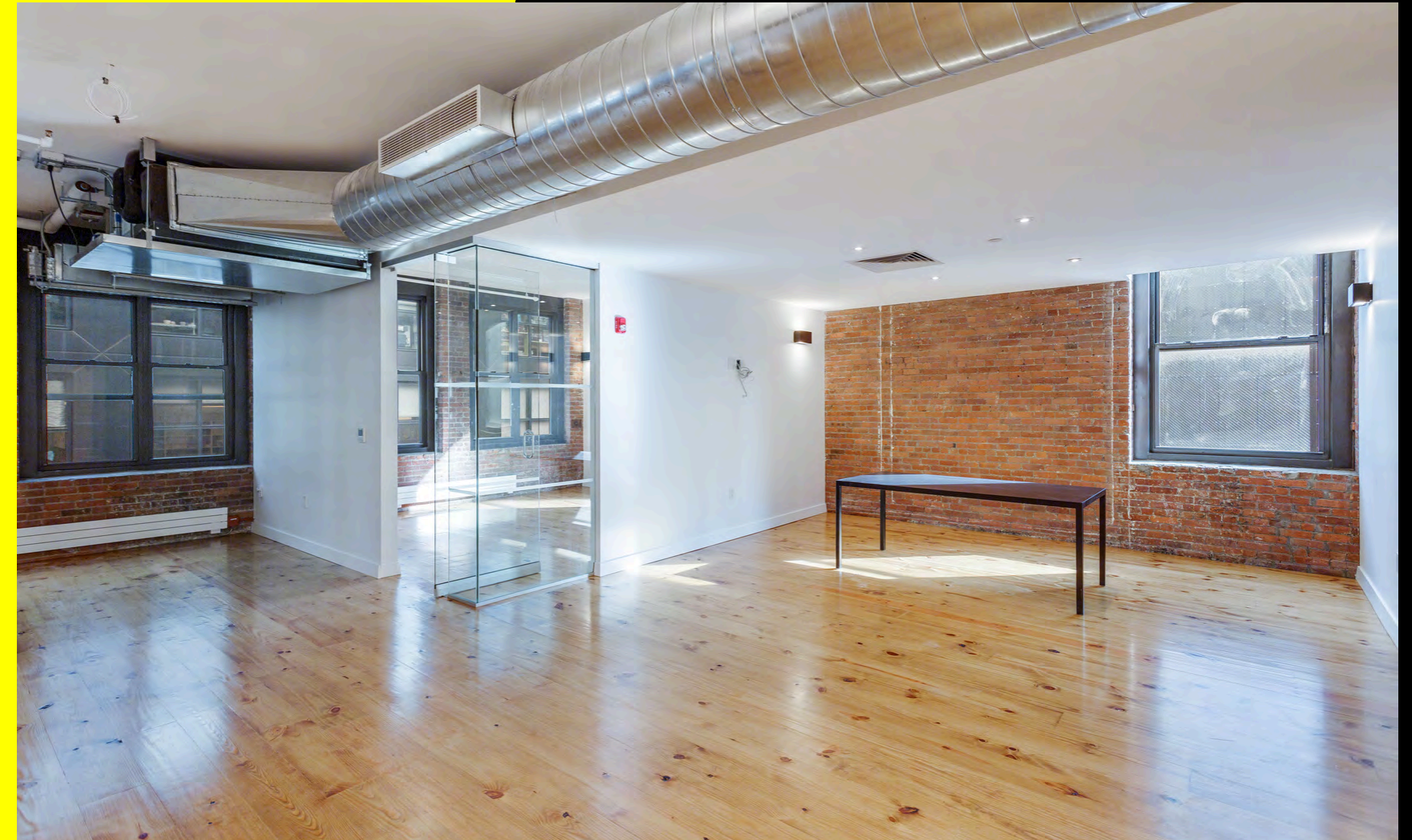
HIGHLIGHTS

- Full floor brand new pre-built space
- Built with glass conference room, glass offices and brand new kitchen
- Private restrooms
- 3 Sides of light



555 WEST 25TH STREET

Full 4th Floor



555 WEST 25TH STREET

Partial 3rd Floor

SIZE & ASKING RENT

Space A: 2,366 SF, \$12,000/month

**reduced from \$12,400*

Space C: 2,649 SF, \$10,100/month

Space D: 2,025 SF, \$8,000/month

Space B (Alternate): 3,700 SF, \$18,500/month

**reduced from \$20,000*

POSSESSION

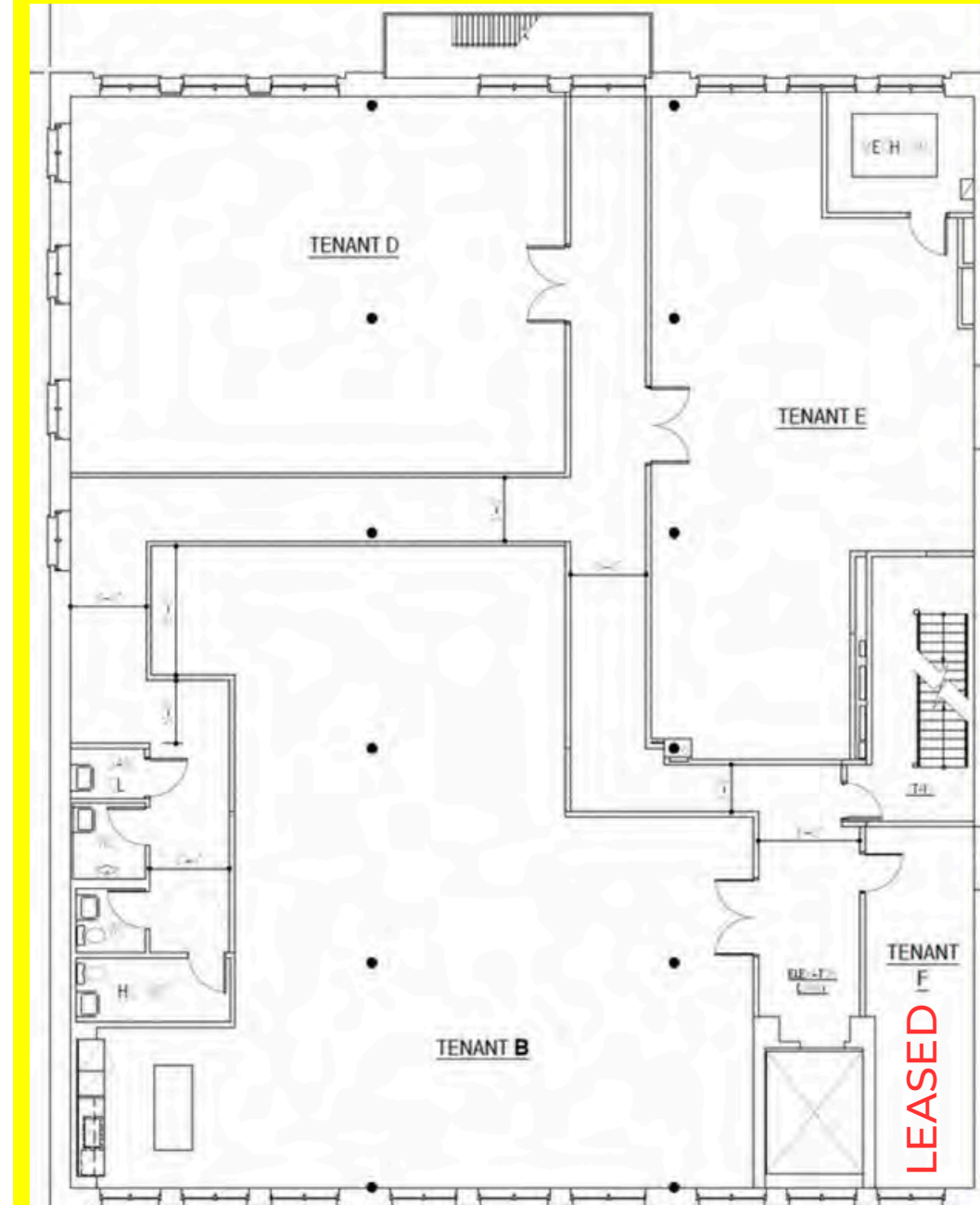
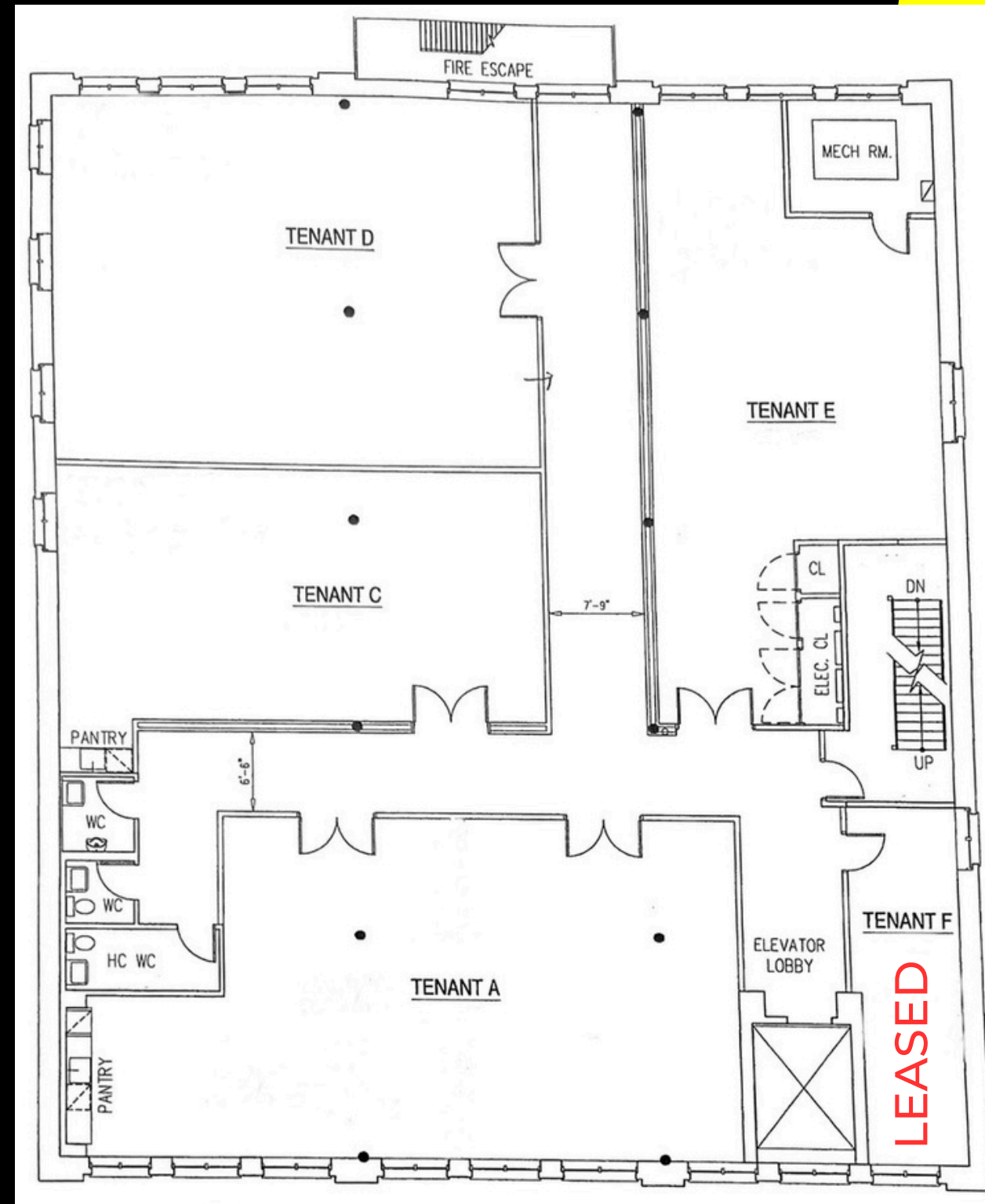
Immediate

TERM

Negotiable

HIGHLIGHTS

- Newly divided office spaces
- Can be delivered furnished
- Spaces A, C and B have pantries

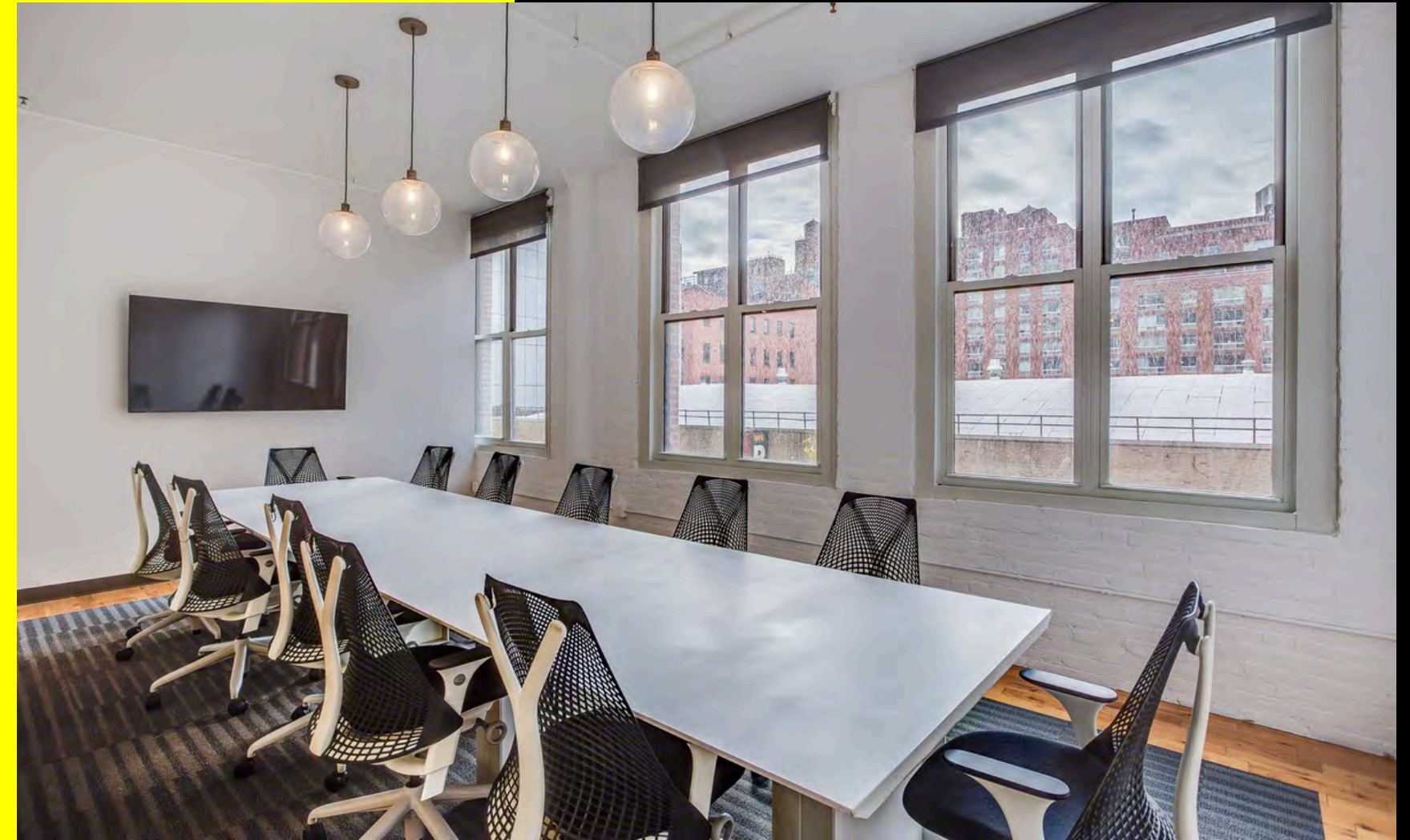


Space B
(Alternate)



555 WEST 25TH STREET

Partial 3rd Floor



555 WEST 25TH STREET

Partial 2nd Floor

SIZE

4,700 RSF

POSSESSION

Immediate

ASKING RENT

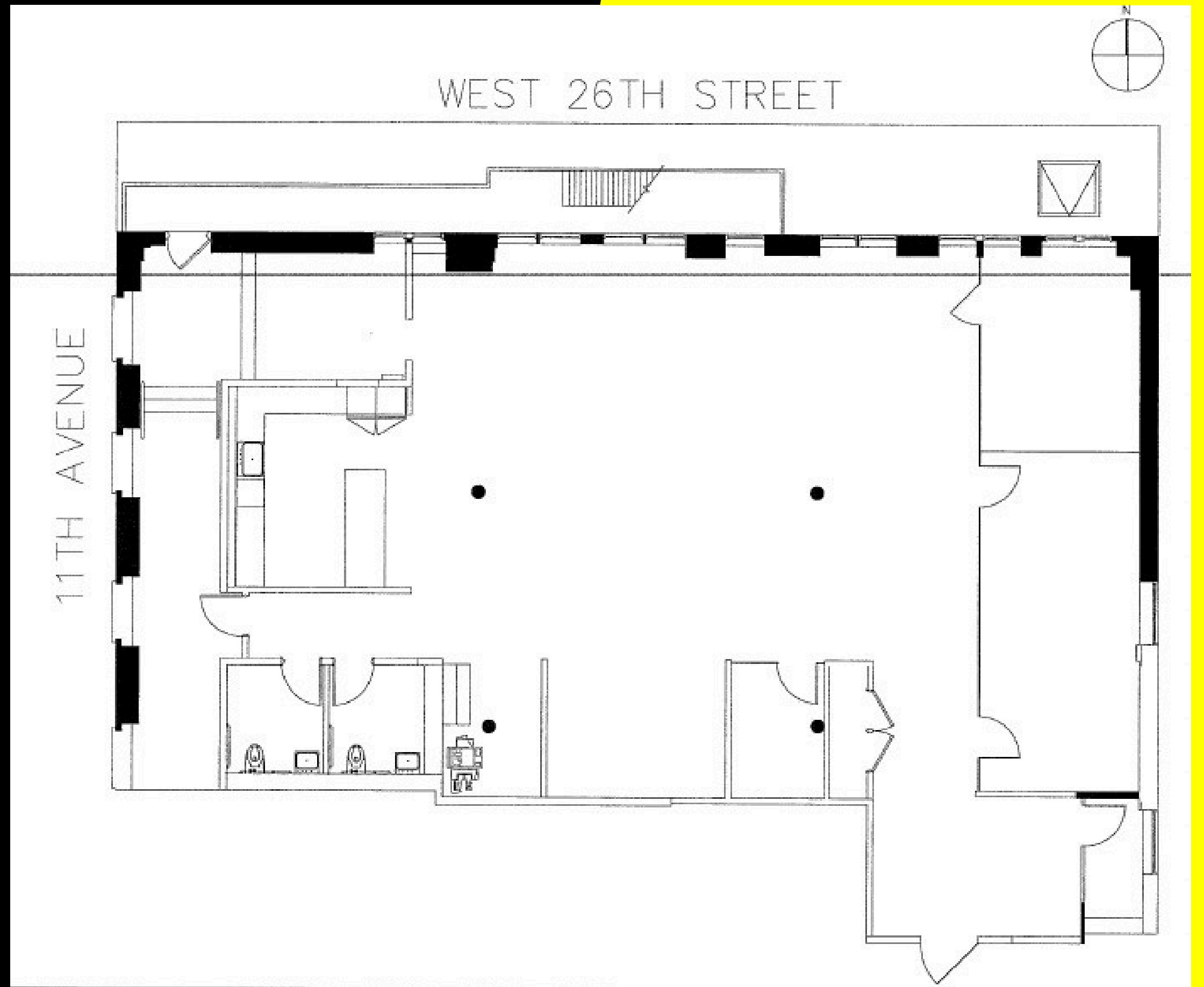
\$45 PSF

TERM

3-10 Years

HIGHLIGHTS

- Fully furnished
- High-end pantry
- Newly renovated
- High exposed ceilings



555 WEST 25TH STREET

Partial 2nd Floor





CONTACT

MICHAEL SEGERMAN

msegerman@currentreadvisors.com

516.297.3337

CURRENT
Real Estate Advisors