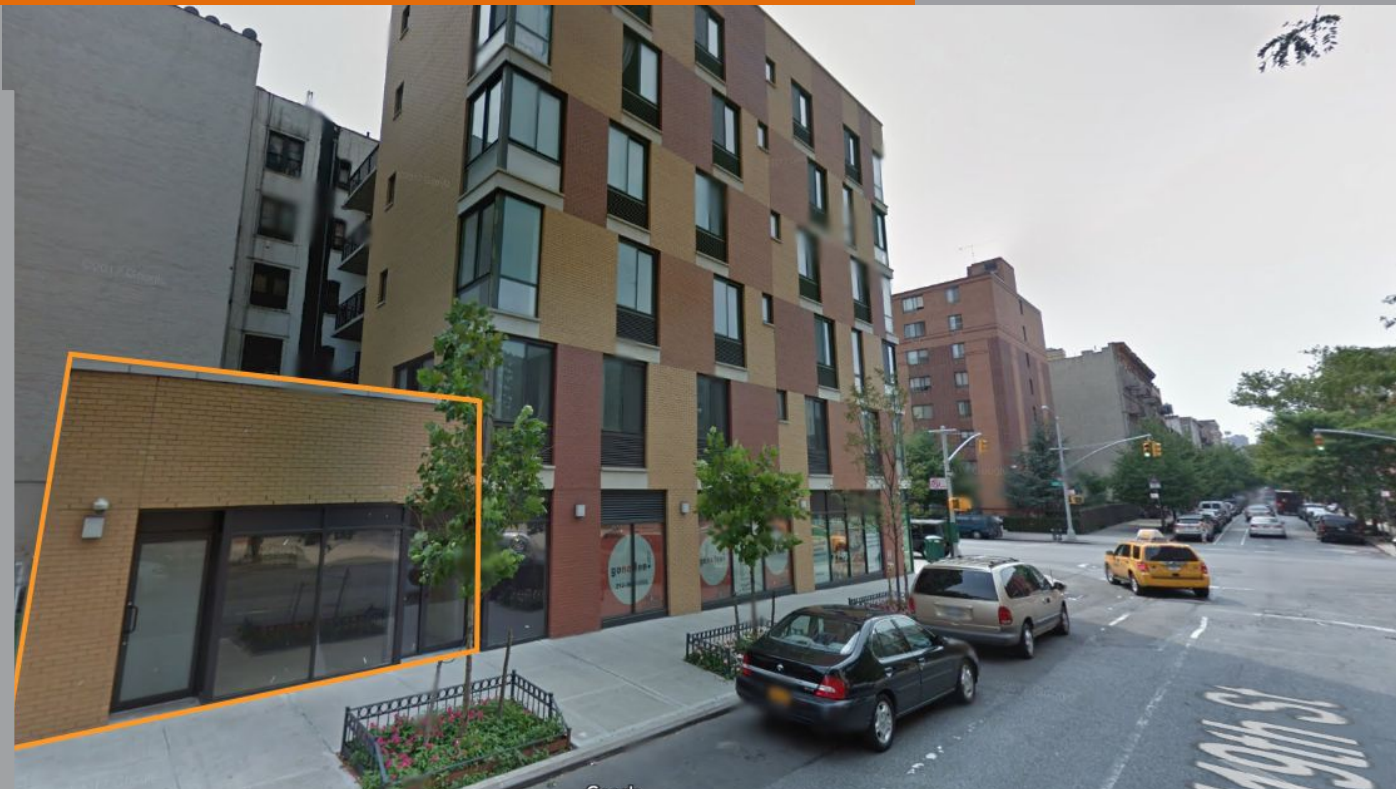


1473 5th Avenue

Between 5th Avenue & Madison Avenue
New York, NY 10035

HELLER

ORGANIZATION



SIZE: Ground Floor (Community Facility) Lower Level
300 SF 1,200 SF

POSSESSION: Immediate

RENT: Upon Request

COMMENTS:

- Spaces can be leased separately.
- New construction, available for the first time!
- 1 block from Marcus Garvey Park, perfect for daycare/preschool use.
- Ground floor, side street entry, leading to large lower level space.

NEIGHBORS:



Joshua Singer
josh@hellerorg.com

Alonzo Jacobs
alonzo@hellerorg.com

212.366.5034

54 West 21st Street, 6th Floor | New York, NY 10010 | P: 212 366-5034 | F: 917 591-0590

All information is from sources deemed reliable. No representation is made and we do not guarantee the accuracy of any information provided. All information must be independently verified. The value of any real estate investment is dependant on a variety of factors and should be evaluated carefully by prospective purchasers and/or tenants.