



RETAIL SPACE AVAILABLE

1051 THIRD AVENUE

EAST 62ND & 63RD STREETS, NEW YORK, NY 10065



SPACE B

GROUND FLOOR Approx. 3,200 sf
LOWER LEVEL Approx. 1,200 sf
FRONTAGE 43' on Third Avenue
POSSESSION Immediate

SPACE C

GROUND FLOOR Approx. 2,550 sf
LOWER LEVEL Approx. 1,000 sf
FRONTAGE 25' on Third Avenue
POSSESSION 12/1/2019

ASKING RENT Upon Request
TERM Through 12/20/2026

COMMENTS

- Steps from four entrances to the newly opened **Q** **F** subway stop on 63rd and Third Avenue, and two blocks from the **N** **R** **W** **4** **5** **6**
- Within two blocks of Bloomingdale's and D&D Building
- Situated in one of the wealthiest zip codes in the world

NEIGHBORING TENANTS

Bloomingdales, lululemon, Nike, Reebok, Starbucks, Urban Outfitters, SoulCycle, Equinox, Juice Press, Dylan's Candy Bar, Ethan Allen, MAC Cosmetics, Crunch Fitness, H&M and Kusmi Tea

**EXCLUSIVE
BROKERS**

Joshua Singer josh@hellerorg.com
 Stephen Weber stephen.weber@hellerorg.com
 Adam Heller adam@hellerorg.com

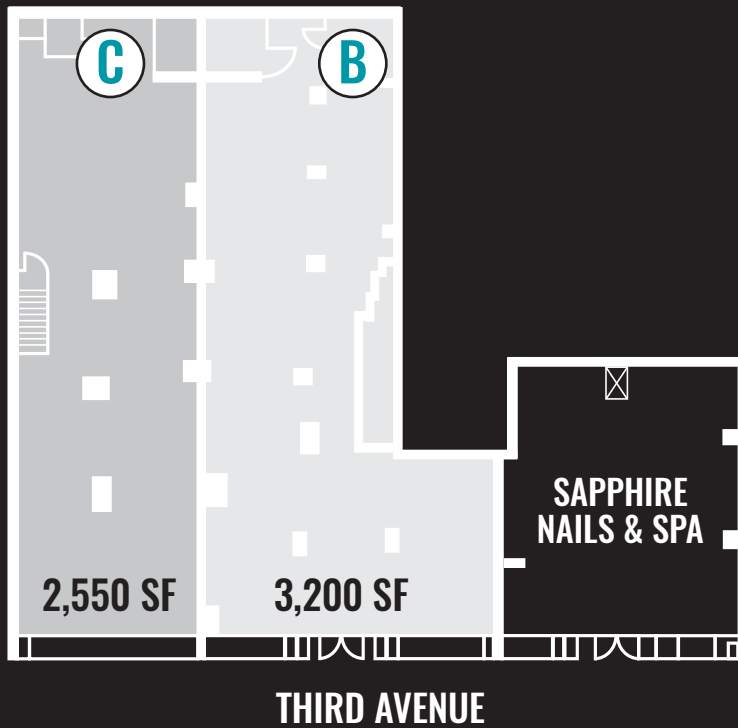
212.366.5034

54 West 21st Street, 6th Floor | New York, NY 10010 | P: 212.366.5034 | F: 917.591.0590

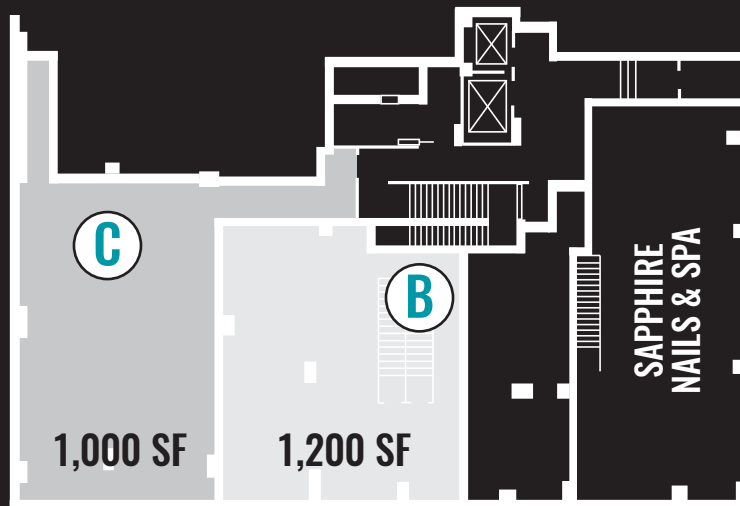
www.hellerorg.com

All information is from sources deemed reliable. No representation is made and we do not guarantee the accuracy of any information provided. All information must be independently verified. The value of any real estate investment is dependent on a variety of factors and should be evaluated carefully by prospective purchasers and/or tenants.

GROUND FLOOR



LOWER LEVEL



**EXCLUSIVE
BROKERS**

Joshua Singer josh@hellerorg.com
Stephen Weber stephen.weber@hellerorg.com
Adam Heller adam@hellerorg.com

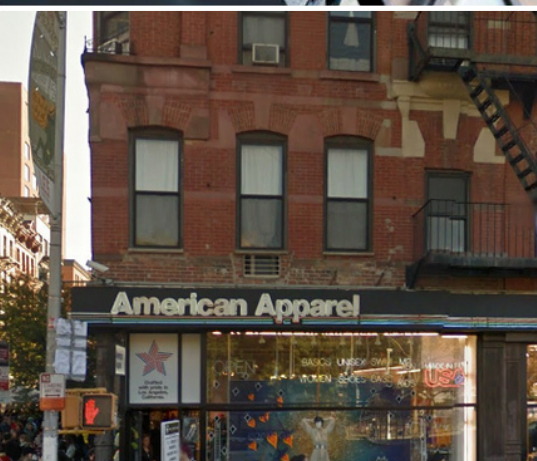
212.366.5034

54 West 21st Street, 6th Floor | New York, NY 10010 | P: 212.366.5034 | F: 917.591.0590

www.hellerorg.com

All information is from sources deemed reliable. No representation is made and we do not guarantee the accuracy of any information provided. All information must be independently verified. The value of any real estate investment is dependent on a variety of factors and should be evaluated carefully by prospective purchasers and/or tenants.

JOIN THESE **ICONIC** STORES



EAST 67TH STREET

THE ART OF SHAVING
 THIERRY RABOTIN
 Reebok

EAST 67TH STREET

NIKE
 CRUNCH
 J. Hill

EAST 66TH STREET

DUNKIN' DONUTS
 L'OCCITANE
 DAVIDsTEA TRUE RELIGION
 Pier 1 imports

EAST 66TH STREET

lululemon athletica
 DUANEreade
 STAPLES

EAST 65TH STREET

CHASE

EAST 65TH STREET

Bank of America
 at&t
 TD Bank
 CVS pharmacy

EAST 64TH STREET

CORRADOS BAKERY
 citibank
 OPTYX
 MAC
 Morton Williams

EAST 64TH STREET

Manhattan Wine Exchange
 BARRY'S BOOTCAMP

F
Q

EAST 63RD STREET

EQUINOX
 SOULCYCLE
 Santander
 Carlyle
 juice GENERATION
 Ray
 juice

F
Q

EAST 63RD STREET

Bank of America
 RIGBY & PELLER
 LINGERIE STYLISTS LONDON
 1051 THIRD
 DUANEreade

EAST 62ND STREET

BIRCH BOUTIQUE
 Bolton's
 SPA NOBE
 MEPHISTO
 GNC
 American Apparel

EAST 62ND STREET

arche
 BISCUITS & BATH
 INFINITE BEAUTY
 SCALINATELLA
 EAST SIDE HARDWARE
 SUBWAY
 UPS
 WESTERN UNION
 COZY CORNER

LEXINGTON AVENUE

THIRD AVENUE

SECOND AVENUE

EAST 61ST STREET

at&t
 DUANEreade
 COHEN'S Fashion Optical
 ISLE OF CAPRI
 CABANA
 ETHAN ALLEN

EAST 61ST STREET

LEARNING EXPRESS TOYS
 sunglass hut
 InNite HEALTH
 PERFECT BROW
 CITY WINE

EAST 60TH STREET

bloomingdales
 MAGNOLIA BAKERY

EAST 60TH STREET

ANASSA TAVERNA
 CINEMA 1, 2 & 3
 PATSY'S
 OCTAGON
 URBAN OUTFITTERS
 Steven Miller Siegel
 Clarks
 COMMUNITY MERCHANT SERVICES

4
5
6

EAST 59TH STREET

H&M
 SWAROVSKI
 GEOX
 The Container Store
 WELLS FARGO
 citibank

EAST 59TH STREET

SAMUEL AND SONS
 verizon
 RUG & KILIM CONCEPT
 DDB
 CRUNCH

EAST 58TH STREET

EAST 58TH STREET

EXCLUSIVE BROKERS

Joshua Singer josh@hellerorg.com
 Stephen Weber stephen.weber@hellerorg.com
 Adam Heller adam@hellerorg.com

212.366.5034

54 West 21st Street, 6th Floor | New York, NY 10010 | P: 212.366.5034 | F: 917.591.0590

www.hellerorg.com

All information is from sources deemed reliable. No representation is made and we do not guarantee the accuracy of any information provided. All information must be independently verified. The value of any real estate investment is dependent on a variety of factors and should be evaluated carefully by prospective purchasers and/or tenants.