

130 Wadsworth Avenue

Southwest Corner of 180th Street & Wadsworth Avenue
New York, NY 10033

HELLER

ORGANIZATION

PRIME COMMUNITY USE SPACE AVAILABLE



SIZE: Approximately 675 SF - Ground Floor Corner
Basement Office/Storage Available



POSSESSION: Immediate

RENT: Upon Request

NEIGHBORS:

- Medical uses - General Practice, Pediatrician, Physical Therapy
- Retail: Modell's, Starbucks, Capital One, Dunkin Donuts, McDonald's, The Children's Place, South Beach Restaurant
- Greek Orthodox Church

COMMENTS:

Located one block from public transportation (MTA Subway  &  Train
Subway stops and Northern Manhattan Port Authority Bus Terminal)

Joshua Singer
josh@hellerorg.com

Lou Moskowitz
lou@hellerorg.com

212.366.5034

54 West 21st Street, 6th Floor | New York, NY 10010 | P: 212 366-5034 | F: 917 591-0590

All information is from sources deemed reliable. No representation is made and we do not guarantee the accuracy of any information provided. All information must be independently verified. The value of any real estate investment is dependant on a variety of factors and should be evaluated carefully by prospective purchasers and/or tenants.

130 Wadsworth Avenue

Southwest Corner of 180th Street & Wadsworth Avenue
New York, NY 10033

HELLER

ORGANIZATION

PRIME COMMUNITY USE SPACE AVAILABLE



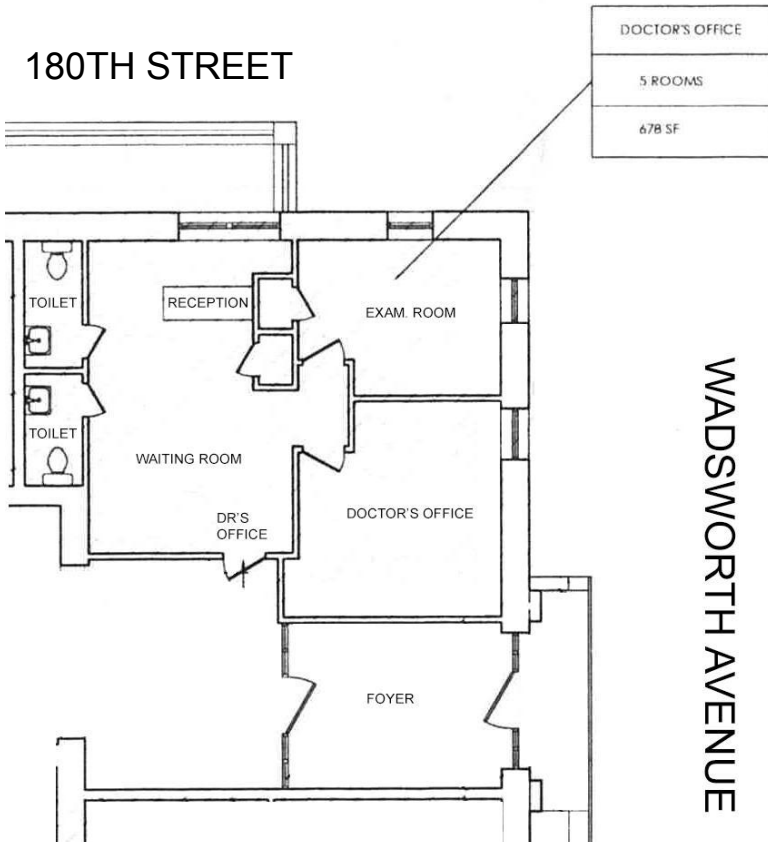
Building
Entrance

Newly Renovated
Entrance Lobby



FLOOR PLAN

180TH STREET



Joshua Singer
josh@hellerorg.com

Lou Moskowitz
lou@hellerorg.com

212.366.5034

54 West 21st Street, 6th Floor | New York, NY 10010 | P: 212 366-5034 | F: 917 591-0590

All information is from sources deemed reliable. No representation is made and we do not guarantee the accuracy of any information provided. All information must be independently verified. The value of any real estate investment is dependant on a variety of factors and should be evaluated carefully by prospective purchasers and/or tenants.