



# Oneworld

PROPERTY ADVISORS

Exceptionally located 3,000 SF retail space  
**940 8<sup>th</sup> Ave, NYC**

*For more information please contact*

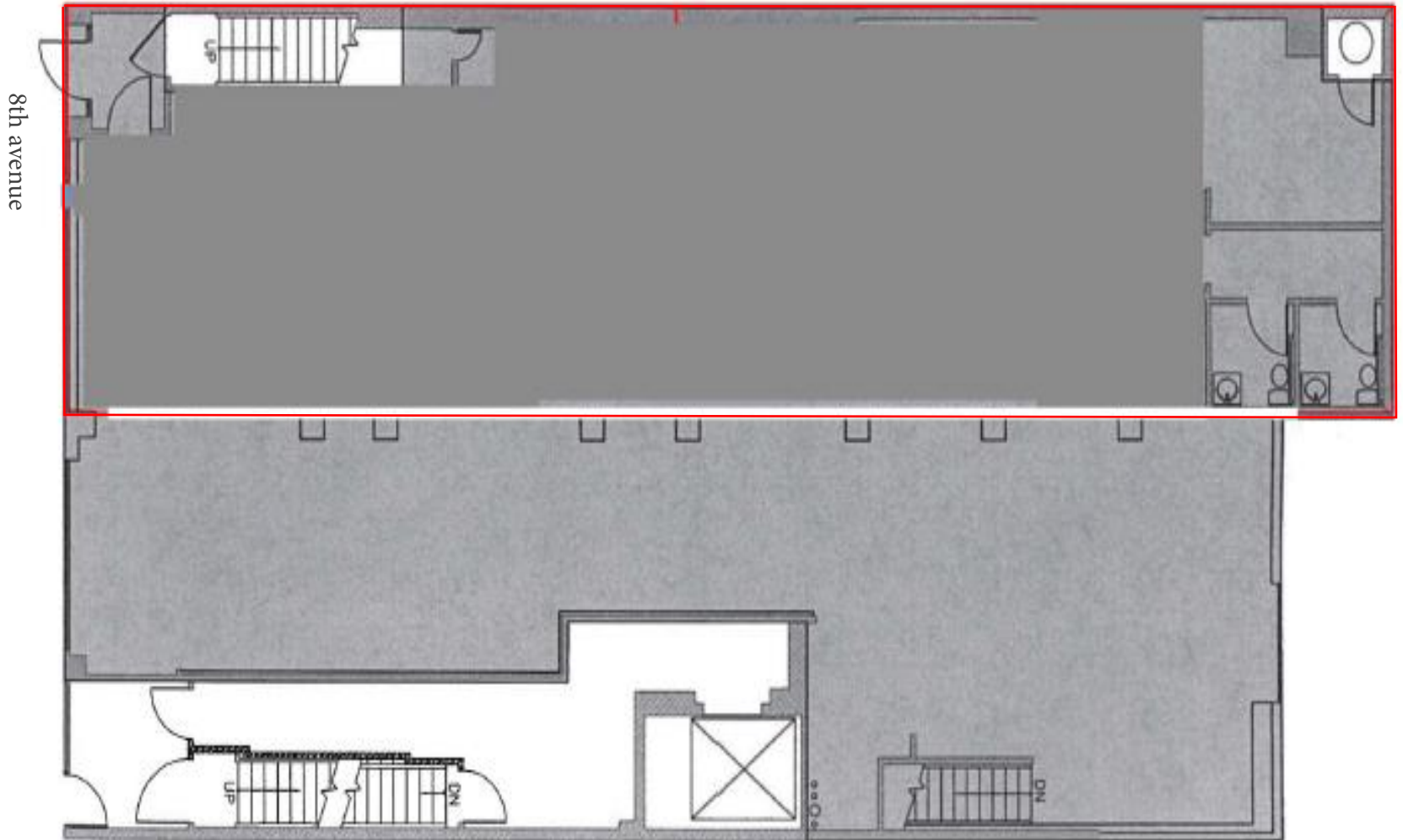
Vlad Sapozhnikov  
O 212.518.1088  
VS@oneworldpa.com

Elena Borokhovich  
O 212.991.8855  
BE@oneworldpa.com

# Property Overview

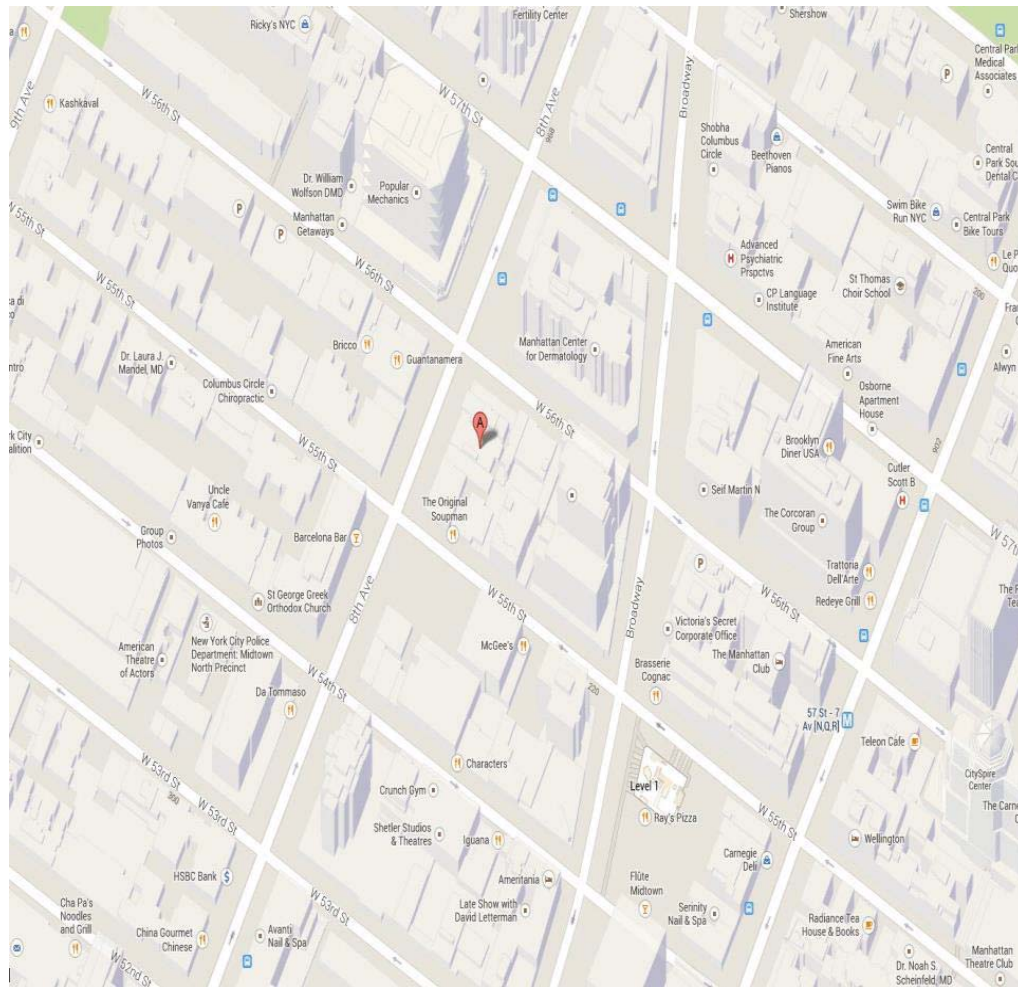
<b>Address</b>	<b>940 8<sup>th</sup> Avenue, NY, NY 10019</b>
Available SF	3,000
Frontage	25' on 8 <sup>th</sup> Ave
Ceiling Heights	15'
Use	Retail, Restaurant
Possession	March 2013
Lease Term	5-10 years
Price	\$225 per SF

# Plan





# Location



Part of the area designated as the ‘Manhattan Core,’ Midtown West is among the city’s most populous neighborhoods. It includes such institutions as the Central Library, the Port Authority terminal, Pennsylvania Station, Madison Square Garden, Macy’s department store and many other retail establishments, along with television studios, parks, restaurants and living quarters. Along the river, it has also spawned spectacular new residential buildings.

Earlier in its history, the area also included the now-vanished Ladies’ Mile and the Tenderloin. With its new luxury dwellings and many transportation options, Midtown West is supremely accessible.