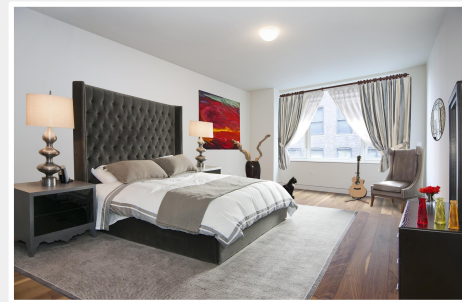
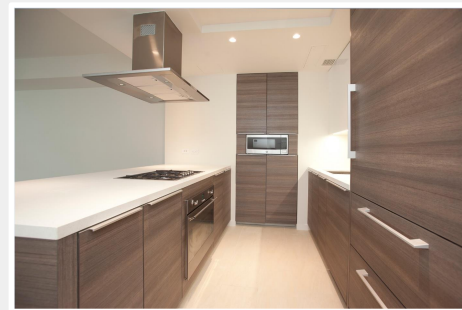


151 West 21st Street, 6-E



PRICE: **\$2,495,000**
Size Two Bedroom
R/B/B 4/2/2
Type Condo
Financing 90%
Common Charges \$1,926
Real Estate Taxes \$1,150
Neighborhood Chelsea

FEATURES

- Brand New Development
- Top of the Line Condo Finishes
- South & North Exposures w/ Great Natural Light
- Chef Kitchen w/ Top of the Line Appliances
- Wide Plank Walnut Floors Throughout
- Heated Bathroom Floors
- Bosch Washer/Dryer in Unit
- Central A/C and Heat
- Abundance of Closets

INVESTMENT PROPERTY. TENANT IN PLACE UNTIL MAY 2021.

Residence 6E is a large and spacious 2-bedroom and 2-bathroom home in a brand new development in the heart of Chelsea. The apartment features top of the line condo finishes, washer / dryer, ample closet space, and a southern exposure with great natural light.

Chelsea Green offers ample living spaces featuring rich, FSC certified 7 wide plank walnut floors and exemplifies the beauty of better living. The custom kitchen designed by world-renowned chef Eric Ripert for Poggenpohl, accentuates the symbiotic relationship between cooking and entertaining while filtered fresh air and drinking water hint at the benefits of living in a building targeting LEED Gold certification. The ergonomic kitchen design is complemented by lush finishes in Teak Lava and Caesarstone, with state-of-the-art Energy Star appliances by Liebherr and Bosch and a 5 burner cooktop and oven by Smeg. The luxurious marble clad bathroom features radiant heated floors with a vanity by Poggenpohl and thermostatic water fixtures by Toto. Bosch washers and dryers are provided in each home. Zone managed and whisper quiet high efficiency Daikin central heat and air conditioning ensure maximum comfort control throughout. Amenities at Chelsea Green include 24hr concierge, state-of-the-art fitness center, resident lounge w/ pool table and common storage.



ADAM HELLER
P: 212.366.5034
C: 917.439.8300
adam@hellerorg.com



DANA RAHAV
P: 212.366.5034
C: 917.250.9093
dana.rahav@hellerorg.com

151 W 21: CHELSEA GREEN

Residence 2E-9E

2 BED 2 BATH

Interior 1,261 sq.ft / 117.15 sq.m

